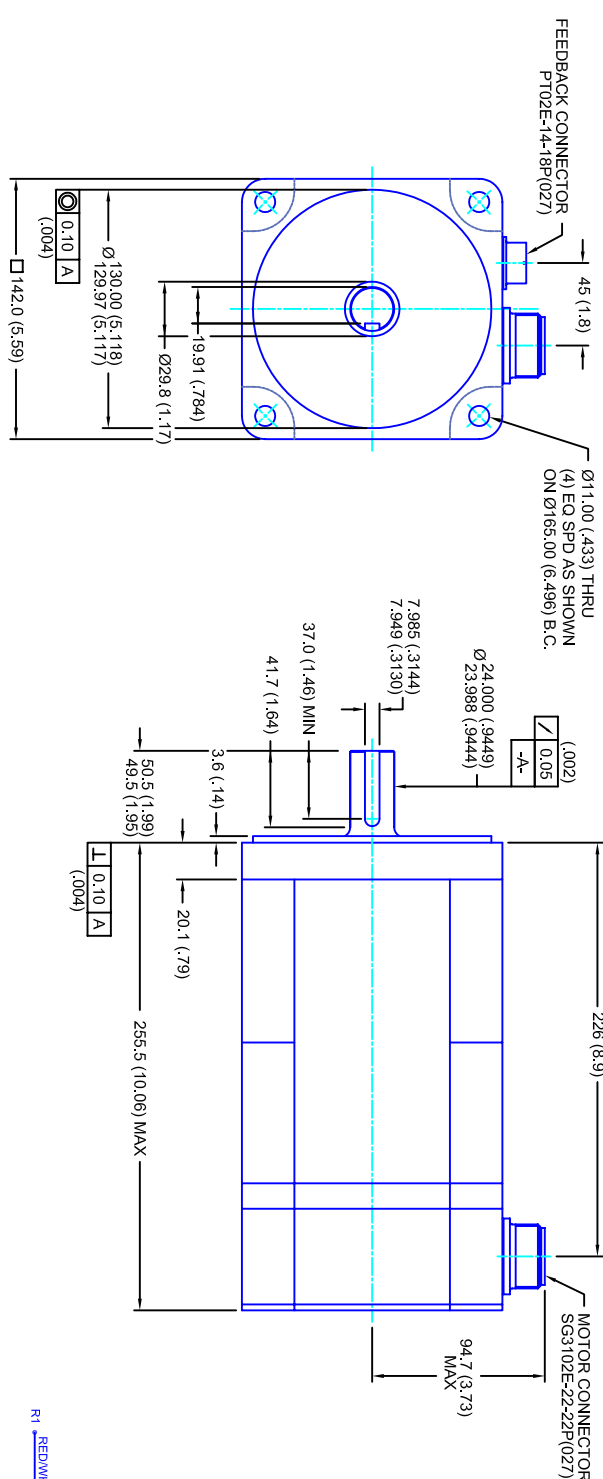


REVISIONS			
REV	DESCRIPTION	DATE	APPD
1	QUOTE DRAWING	9/7/04	



- NOTES:**
1. MILLIMETERS (INCHES)
  2. AXIAL LOAD: 23 KG [ 50 LBS ] MAX
  3. RADIAL LOAD: 68 KG [ 150 LBS ] MAX @ 25.4MM [ 1.00 ] FROM FACE
  4. MOTOR SEALED TO IP65
  5. MOTOR SHAFT: 416 STAINLESS STEEL
  6. MOTOR FINISH: BLACK MATT FINISH
  7. MOTOR WEIGHT: 13 KG [ 33 LBS ]

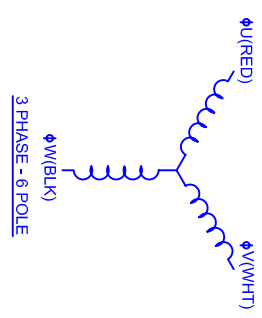
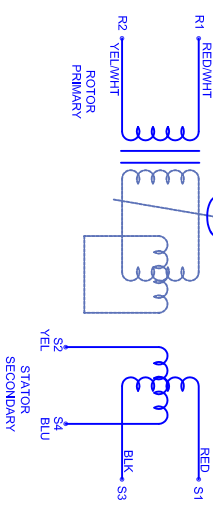
**ELECTRICAL DATA**

MOTOR PARAMETERS	UNITS/MEASURE	VALUES
VOLTAGE	VOLTS-AC	230
AMP TYPE	-	SINE
HORSEPOWER	HP	2.9
KILOWATTS	KW	2.1
MAX OPERATING SPEED	RPM	1750
SPEED @ RATED TORQUE	RPM	1500
*CONTINUOUS RATED TORQUE @ 1500 RPM	IN-LBS[INm]	120[13.6]
*CONTINUOUS STALL TORQUE	IN-LBS[INm]	130[14.7]
*CONTINUOUS LINE CURRENT	AMPS[RMS/Φ]	7.1
PEAK TORQUE	IN-LBS[INm]	390[44.1]
PEAK CURRENT	AMPS[RMS/Φ]	21.3
MAX THEORETICAL ACCEL.	RAD/SEC <sup>2</sup>	35,135
TORQUE SENSITIVITY	KI [N-BS/AMP/RMS/Φ][IN-AMP/RMS/Φ]	18.3[2.06]
BACK EMF (LINE TO LINE)	Vrms/Krpm	115
D.C. RESISTANCE (P-P)	OHMS	1.5
INDUCTANCE (P-P)	MILLIHENRIES	10
ROTOR INERTIA	IN-LBS-SEC <sup>2</sup> [KG-M <sup>2</sup> ]	.0111[0.0125]
STATIC FRICTION	TT	2.4[0.27]

**CONNECTION CHART**

P102E-14-18P(027)			
REST/THERM WIRE LEADS	WIRE FUNCTION	WIRE COLOR	
A	-	-	
B	-	-	
C	-	-	
D	RES SHLD	WHT/BLK	
E	REF	RED/WHT	
F	SIN GND	YEL	
G	COS GND	BLK	
H	SIN	BLU	
J	-	-	
K	-	-	
L	-	-	
M	-	-	
N	THERM	WHT	
P	-	-	
R	REF GND	YEL/WHT	
S	COS	RED	
T	-	-	
U	THERM	WHT	

SG3102E-22-22P(027)			
MOTOR WIRE LEADS	WIRE FUNCTION	WIRE COLOR	
A	Φ U	RED	
B	Φ V	WHT	
C	Φ W	BLK	
D	PE GND	GRN/YEL	



**CUSTOM MOTORS INC**

**142MM - 1 STK**

**230V/KE=115MET/RES/CONN**

TOLERANCES UNLESS SPECIFIED	
BORER:	= H12
BORE:	= H7
DECIMAL .xxx	± .12 (005)
DECIMAL .xx	± .25 (010)
DECIMAL .x	± .51 (020)
ANGLE	± .40 (016)
ANGLE (MM/INCHES)	± .030

REMOVE ALL BURRS/BREAK SHARP EDGES AS SHOWN (010)

PROPRIETARY RIGHTS OF CUSTOM MOTORS ARE INCLUDED IN THE INFORMATION DISCLOSED HEREIN. THIS INFORMATION IS NOT TO BE REPRODUCED OR TRANSMITTED IN ANY FORM OR BY ANY MEANS, ELECTRONIC OR MECHANICAL, INCLUDING PHOTOCOPYING, RECORDING, OR BY ANY INFORMATION STORAGE AND RETRIEVAL SYSTEM.

CUSTOMER: - DATE: 9/7/04 DRAWING NO: CM1421Q115MKRCS DRAWN: DFLA SHEET: 1 OF 1

SCALE: 1/2:1

\*25°C AMBIENT WITH A MAXIMUM CASE TEMPERATURE OF 100°C ON THE MOTOR. THERMOSTAT IN STATOR WILL OPEN IF STATOR TEMPERATURE EXCEEDS 155°C. THIS WILL GIVE YOU ~10% HEADROOM IN THE CONTINUOUS TORQUE RATING BEFORE THERMOSTAT OPENS. MOTOR MOUNTED ON A 305 X 305 X 12.7MM ALUMINUM HEATSINK.