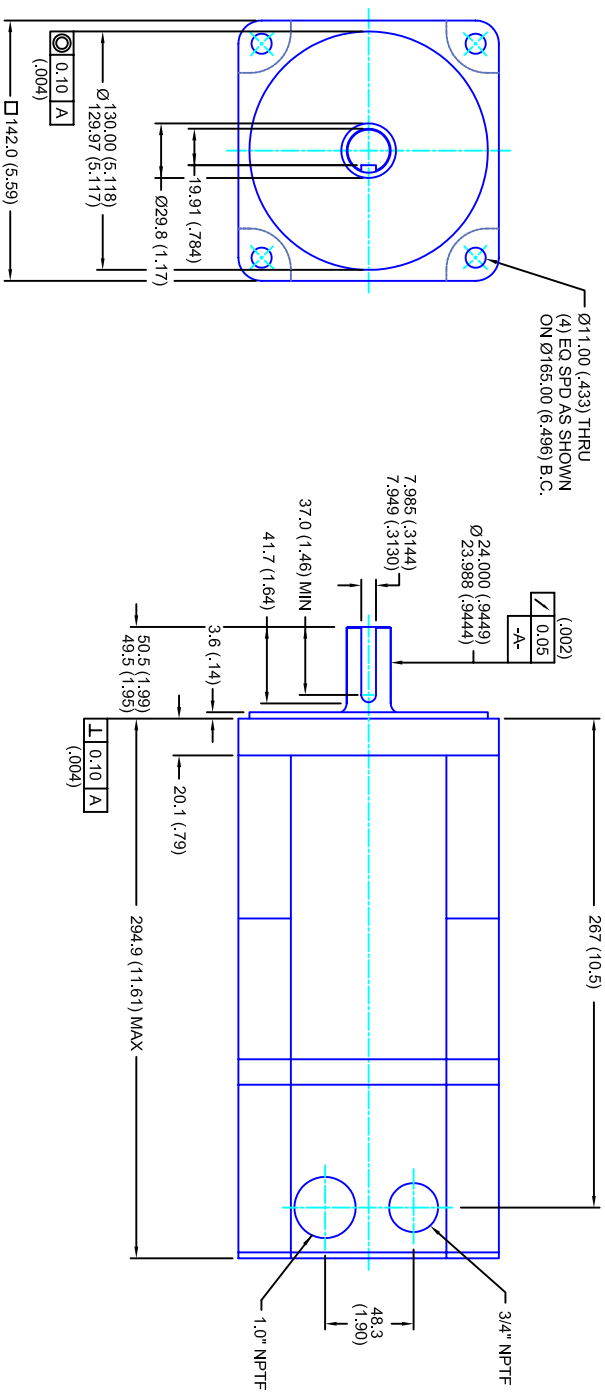


REVISIONS			
REV	DESCRIPTION	DATE	APPD
1	QUOTE DRAWING	9/7/04	



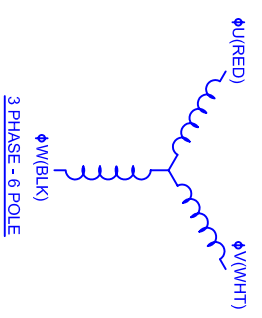
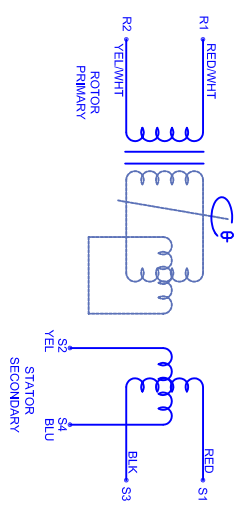
- NOTES:**
1. MILLIMETERS (INCHES)
 2. AXIAL LOAD: 23 KG [50 LBS] MAX
 3. RADIAL LOAD: 68 KG [150 LBS] MAX @ 25.4MM [1.00] FROM FACE
 4. MOTOR SEALED TO IP65
 5. MOTOR SHAFT: 416 STAINLESS STEEL
 6. MOTOR FINISH: BLACK MATT FINISH
 7. MOTOR WEIGHT: 16 KG [35 LBS]

ELECTRICAL DATA

MOTOR PARAMETERS	UNITS/MEASURE	VALUES
VOLTAGE	VOLTS-AC	230
AMP TYPE	-	SINE
HORSEPOWER	HP	2.9
KILOWATTS	KW	2.1
MAX OPERATING SPEED	RPM	1750
SPEED @ RATED TORQUE	RPM	1500
*CONTINUOUS RATED TORQUE @ 1500 RPM	IN-LBS(IN)	120(13.6)
*CONTINUOUS STALL TORQUE	IN-LBS(IN)	130(14.7)
CONTINUOUS LINE CURRENT	AMPS(RMS/Φ)	7.1
PEAK TORQUE	IN-LBS(IN)	390(44.1)
PEAK CURRENT	AMPS(RMS/Φ)	21.3
MAX THEORETICAL ACCEL.	RAD/SEC ²	35,135
TORQUE SENSITIVITY	KI [N-LS/AMP/RMS/Φ] [IN-AMP/RMS/Φ]	18.3(2.06)
BACK EMF (LINE TO LINE)	Vrms/Krpm	115
D.C. RESISTANCE (P-P)	OHMS	1.5
INDUCTANCE (P-P)	MILLIHENRIES	10
ROTOR INERTIA	IN-LBS-SEC ² [KG-M ²]	.011(1.00125)
STATIC FRICTION	FT	2.4(0.27)

CONNECTION CHART

TERM	WIRE FUNCTION	WIRE COLOR	TERM	WIRE FUNCTION	WIRE COLOR
R1	GND/SHLD	WHT/BLK	1	Φ U	RED
R2	THERM	WHT	2	Φ V	WHT
R3	THERM	WHT	3	Φ W	BLK
R4	SIN GND	YEL	4	PE GND	GRN/YEL
R5	COS GND	BLK			
R6	COS	RED			
R7	SIN	BLU			
R8	REF	RED/WHT			
R9	REF GND	YEL/WHT			
R10	-	-			
R11	-	-			



TOLERANCES UNLESS SPECIFIED

BORER: = H12 ✓
 DRILL: = H12 (0.05)
 DECIMAL .XXX ±.12 (0.05)
 DECIMAL .XX ±.25 (0.10)
 DECIMAL .X ±.51 (0.20)
 FRACTION ±.01 (0.25)
 ANGLE ±.030

REMOVE ALL BURRS/BREAK SHARP EDGES AS SHOWN (0.10°)

PROPRIETARY RIGHTS OF CUSTOM MOTORS ARE INCLUDED IN THE INFORMATION DISCLOSED HEREIN. THIS INFORMATION IS PROVIDED AS A SERVICE TO OUR CUSTOMERS. WE DO NOT ASSUME LIABILITY FOR ANY DAMAGE TO PROPERTY OR PERSONS ARISING FROM THE USE OF THIS INFORMATION.

CUSTOMER: - DRAWING NO. **CM1421Q115MKRNPPT** DRAWN: DFLA SHEET: 1 OF 1

SCALE: 1/2:1 DATE: 9/7/04

FINISH: MATERIAL:



142MM - 1 STK
 230V/KE=115M/TRES/NPT

*25°C AMBIENT WITH A MAXIMUM CASE TEMPERATURE OF 100°C ON THE MOTOR. THERMOSTAT IN STATOR WILL OPEN IF STATOR TEMPERATURE EXCEEDS 155°C. THIS WILL GIVE YOU ~10% HEADROOM IN THE CONTINUOUS TORQUE RATING BEFORE THERMOSTAT OPENS. MOTOR MOUNTED ON A 305 X 305 X 12.7MM ALUMINUM HEATSINK.