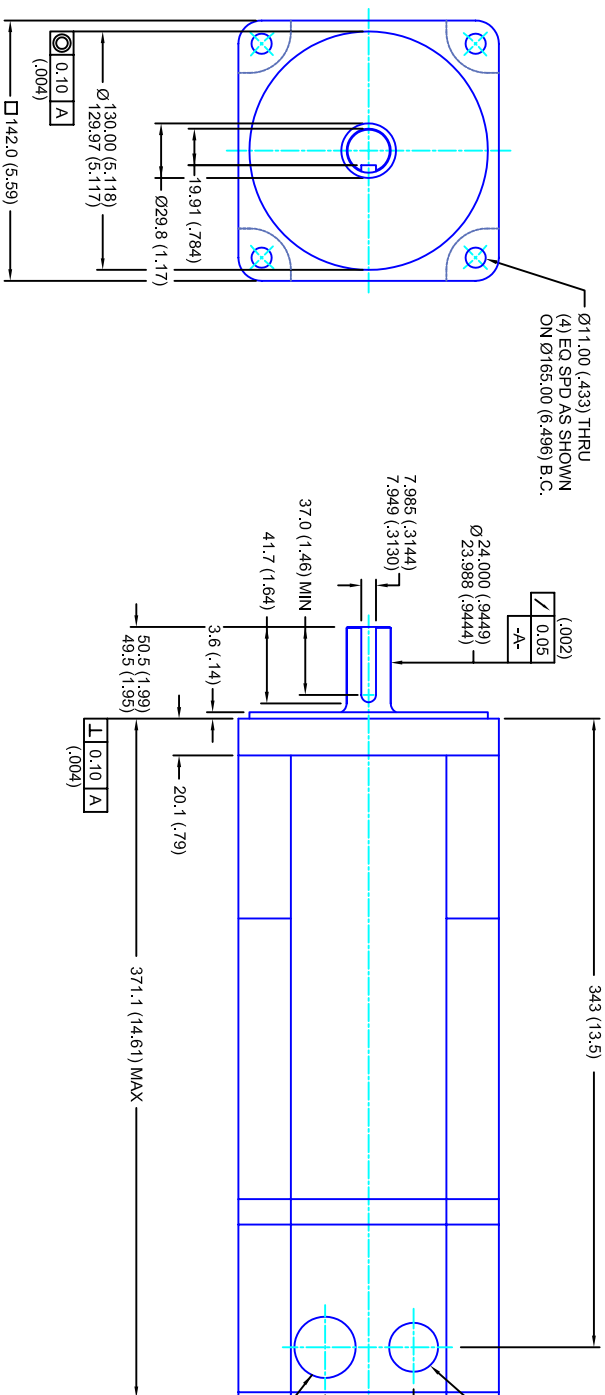


REVISIONS			
REV	DESCRIPTION	DATE	APPD
1	QUOTE DRAWING	9/7/04	



- NOTES:**
1. MILLIMETERS (INCHES)
 2. AXIAL LOAD: 23 KG [50 LBS] MAX
 3. RADIAL LOAD: 68 KG [150 LBS] MAX @ 25.4MM [1.00] FROM FACE
 4. MOTOR SEALED TO IP65
 5. MOTOR SHAFT: 416 STAINLESS STEEL
 6. MOTOR FINISH: BLACK MATT FINISH
 7. MOTOR WEIGHT 21 KG [46 LBS]

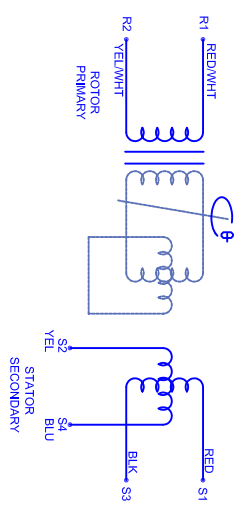
ELECTRICAL DATA

MOTOR PARAMETERS	UNITS/MEASURE	VALUES
VOLTAGE	VOLTS-AC	230
AMP TYPE	-	SINE
HORSEPOWER	HP	2.9
KILOWATTS	KW	2.1
MAX OPERATING SPEED	RPM	1760
SPEED @ RATED TORQUE	RPM	1500
*CONTINUOUS RATED TORQUE @ 1500 RPM	IN-LBS(IN) / N-M	120(13.6) / 13.0(14.7)
*CONTINUOUS STALL TORQUE	IN-LBS(IN) / N-M	130(14.7) / 14.7
CONTINUOUS LINE CURRENT	AMPS(RMS/Φ)	7.1
PEAK TORQUE	IN-LBS(IN) / N-M	390(44.1)
PEAK CURRENT	AMPS(RMS/Φ)	21.3
MAX THEORETICAL ACCEL.	RAD/SEC ²	33.913
TORQUE SENSITIVITY	KI [N-BS/AMP/RMS/Φ] / (N-AMP/RMS/Φ)	18.3(2.06)
BACK EMF (LINE TO LINE)	Vrms/Krpm	115
D.C. RESISTANCE (P-P)	OHMS	1.5
INDUCTANCE (P-P)	MILLIHENRIES	10
ROTOR INERTIA	IN-LBS-SEC ² [KG-M ²]	.0115(.00130) w/ Bk
STATIC FRICTION	TT	2.4(0.27)

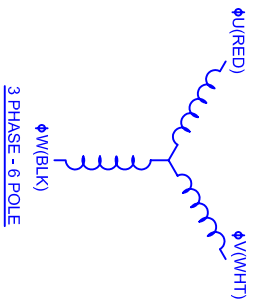
CONNECTION CHART

RES/THERM WIRE LEADS	WIRE FUNCTION	WIRE COLOR
R1	GND/SHLD	WHT/BLK
R2	THERM	WHT
R3	THERM	WHT
R4	SIN GND	YEL
R5	COS GND	BLK
R6	COS	RED
R7	SIN	BLU
R8	REF	RED/WHT
R9	REF GND	YEL/WHT
R10	BRK (-)	BLK
R11	BRK (+)	RED

BRAKE INFO:
 INPUT VOLTAGE: 24 VDC
 HOLDING FORCE: 40.7 Nm [360 IN-LBS] MAX
 CURRENT DRAW: 1.13 AMPS
 RELEASE TIME: 100 ms
 INERTIA: .00041 IN-LBS-SEC²



SCHEMATIC FOR BRUSHLESS RESOLVER



142MM - 1 STK

230V/KE=115MET/RES/NPT/BRK

WATERIAL:	SCALE	DATE	DRAWING NO.	CUSTOMER:	DATE	DRAWING NO.	REVISIONS
	1/2:1	9/7/04	CM1421Q115MKNRNPBTB				1

*25°C AMBIENT WITH A MAXIMUM CASE TEMPERATURE OF 100°C ON THE MOTOR. THERMOSTAT IN STATOR WILL OPEN IF STATOR TEMPERATURE EXCEEDS 155°C. THIS WILL GIVE YOU ~10% HEADROOM IN THE CONTINUOUS TORQUE RATING BEFORE THERMOSTAT OPENS. MOTOR MOUNTED ON A 305 X 305 X 12.7MM ALUMINUM HEATSINK.