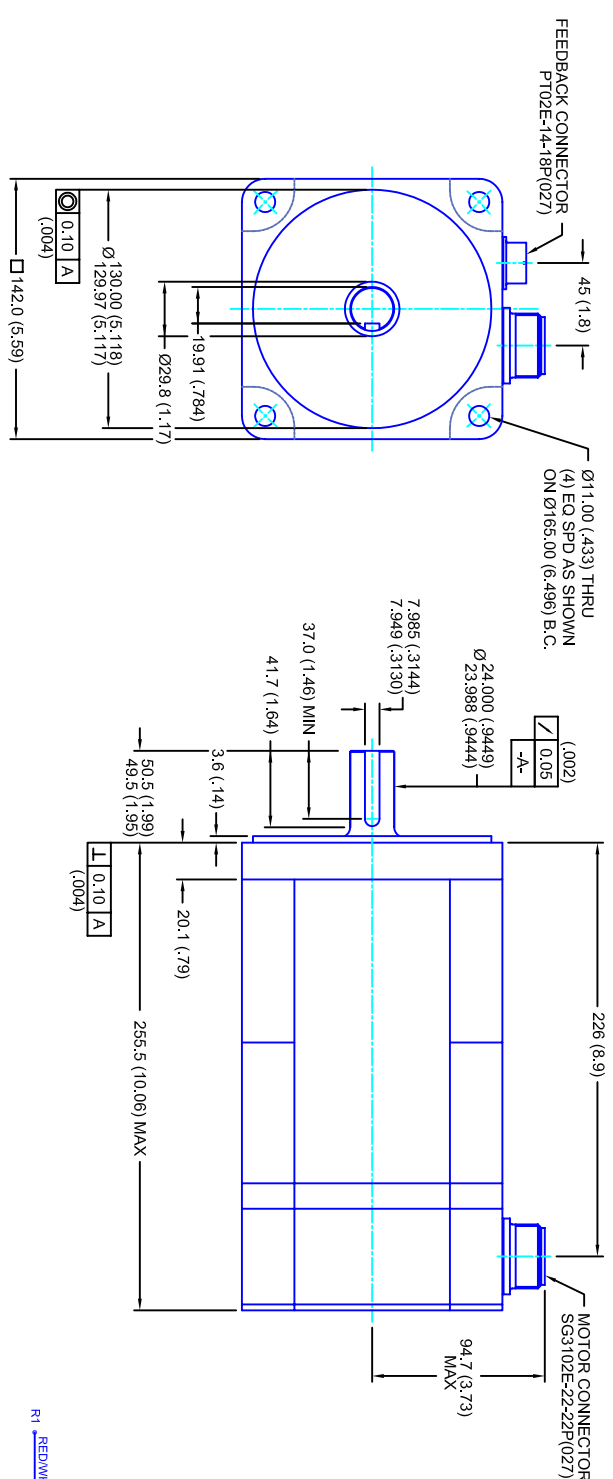


REVISIONS			
REV	DESCRIPTION	DATE	APPD
1	QUOTE DRAWING	9/7/04	



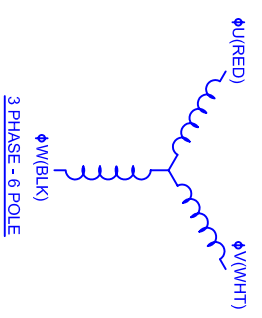
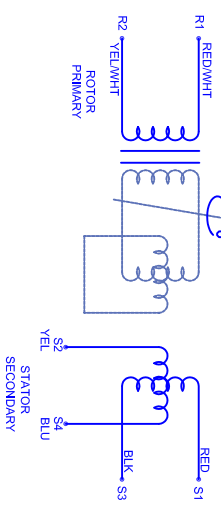
- NOTES:**
1. MILLIMETERS (INCHES)
 2. AXIAL LOAD: 23 KG [50 LBS] MAX
 3. RADIAL LOAD: 68 KG [150 LBS] MAX @ 25.4MM [1.00] FROM FACE
 4. MOTOR SEALED TO IP65
 5. MOTOR SHAFT: 416 STAINLESS STEEL
 6. MOTOR FINISH: BLACK MATT FINISH
 7. MOTOR WEIGHT: 13 KG [33 LBS]

ELECTRICAL DATA

MOTOR PARAMETERS	UNITS/MEASURE	VALUES
VOLTAGE	VOLTS-AC	460
AMP TYPE	-	SINE
HORSEPOWER	HP	4.9
KILOWATTS	KW	3.6
MAX OPERATING SPEED	RPM	3400
SPEED @ RATED TORQUE	RPM	2800
*CONTINUOUS RATED TORQUE @ 2800 RPM	IN-LBS[INm]	110[12.4]
*CONTINUOUS STALL TORQUE	IN-LBS[INm]	130[14.7]
*CONTINUOUS LINE CURRENT	AMPS[RMS/Φ]	7.1
PEAK TORQUE	IN-LBS[INm]	390[44.1]
PEAK CURRENT	AMPS[RMS/Φ]	21.3
MAX THEORETICAL ACCEL.	RAD/SEC ²	35,135
TORQUE SENSITIVITY	KI [N-BS/AMP/RMS/Φ][IN-AMP/RMS/Φ]	18.3[2.06]
BACK EMF (LINE TO LINE)	Vrms/Krpm	115
D.C. RESISTANCE (P-P)	OHMS	1.5
INDUCTANCE (P-P)	MILLIHENRIES	10
ROTOR INERTIA	IN-LBS-SEC ² [KG-M ²]	.0111[0.0125]
STATIC FRICTION	TT	2.4[0.27]

CONNECTION CHART

PT02E-14-18P(027)				SG3102E-22-22P(027)			
REST/TERM	WIRE FUNCTION	WIRE COLOR	WIRE LEADS	MOTOR WIRE FUNCTION	WIRE COLOR	WIRE LEADS	
A	-	-	-	A	Φ U	RED	
B	-	-	-	B	Φ V	WHT	
C	-	-	-	C	Φ W	BLK	
D	RES SHLD	WHT/BLK	-	D	PE GND	GRN/YEL	
E	REF	RED/WHT	-				
F	SIN GND	YEL	-				
G	COS GND	BLK	-				
H	SIN	BLU	-				
J	-	-	-				
K	-	-	-				
L	-	-	-				
M	-	-	-				
N	TERM	WHT	-				
P	-	-	-				
R	REF GND	YEL/WHT	-				
S	COS	RED	-				
T	-	-	-				
U	TERM	WHT	-				



142MM - 1 STK
460V/KE=115M/ET/RES/CONN

TOLERANCES UNLESS SPECIFIED	
BORER:	= H12
DRILL:	= H12
DECIMAL .xxx	± .12 (005)
DECIMAL .xx	± .25 (010)
DECIMAL .x	± .51 (020)
ANGLE	± .40 (016)
ANGLE (MM/INCHES)	± 0.50

REMOVE ALL BURRS/BREAK SHARP EDGES AS SHOWN (0.10°)

PROPRIETARY RIGHTS OF CUSTOM MOTORS ARE INCLUDED IN THE INFORMATION DISCLOSED HEREIN. THIS INFORMATION IS NOT BE REPRODUCED OR TRANSMITTED IN ANY FORM OR BY ANY MEANS, ELECTRONIC OR MECHANICAL, INCLUDING PHOTOCOPYING, RECORDING, OR BY ANY INFORMATION STORAGE AND RETRIEVAL SYSTEM.

CUSTOMER: - - - - - DRAWING NO. **CM1421R115MKRCS** DRAWN: DFLA SHEET: 1 OF 1

SCALE: 1/2:1 DATE: 9/7/04

*25°C AMBIENT WITH A MAXIMUM CASE TEMPERATURE OF 100°C ON THE MOTOR. THERMOSTAT IN STATOR WILL OPEN IF STATOR TEMPERATURE EXCEEDS 155°C. THIS WILL GIVE YOU ~10% HEADROOM IN THE CONTINUOUS TORQUE RATING BEFORE THERMOSTAT OPENS. MOTOR MOUNTED ON A 305 X 305 X 12.7MM ALUMINUM HEATSINK.