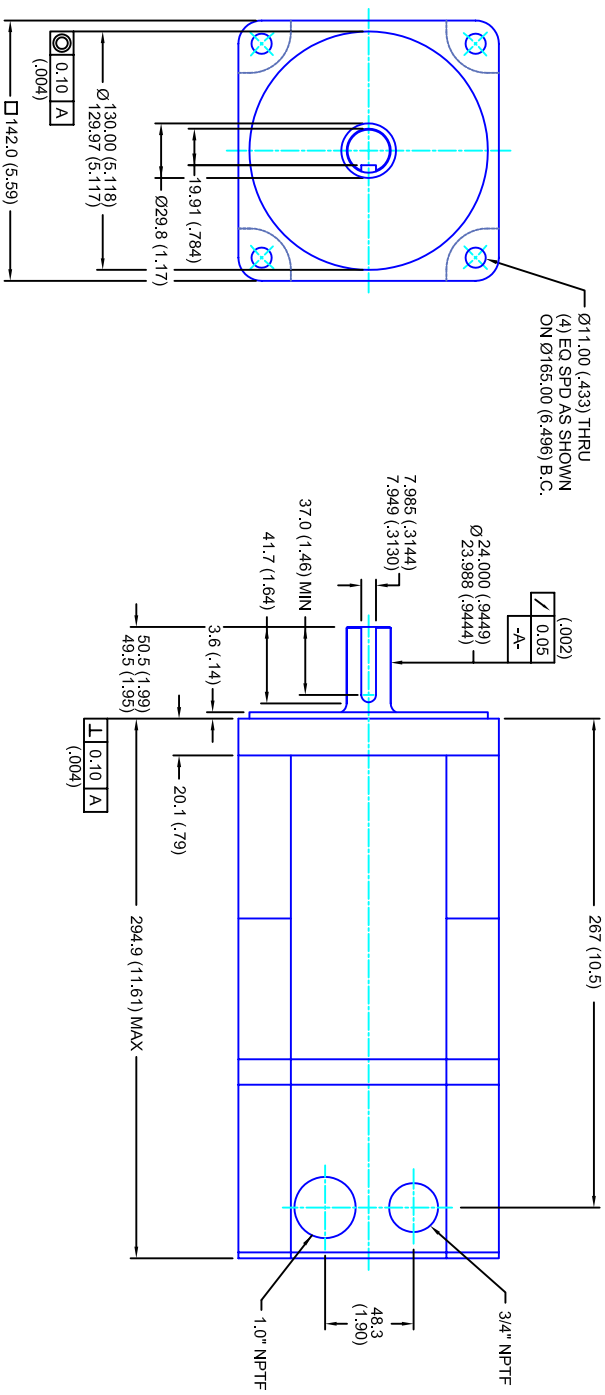


REVISIONS			
REV	DESCRIPTION	DATE	APPD
1	QUOTE DRAWING	7/14/04	



- NOTES:**
1. MILLIMETERS (INCHES)
  2. AXIAL LOAD: 23 KG [ 50 LBS ] MAX
  3. RADIAL LOAD: 68 KG [ 150 LBS ] MAX @ 25.4MM [ 1.00 ] FROM FACE
  4. MOTOR SEALED TO IP65
  5. MOTOR SHAFT: 416 STAINLESS STEEL
  6. MOTOR FINISH: BLACK MATT FINISH
  7. MOTOR WEIGHT: 16 KG [ 35 LBS ]

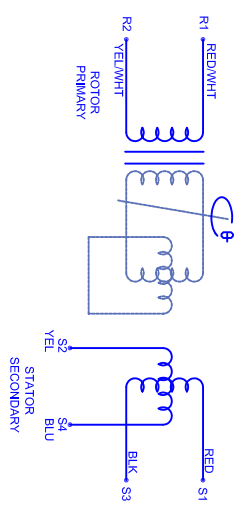
**ELECTRICAL DATA**

MOTOR PARAMETERS	UNITS/MEASURE	VALUES
VOLTAGE	VOLTS-AC	230
AMP TYPE	-	SINE
HORSEPOWER	HP	4.9
KILOWATTS	KW	3.6
MAX OPERATING SPEED	RPM	3400
SPEED @ RATED TORQUE	RPM	2800
*CONTINUOUS RATED TORQUE @ 2800 RPM	IN-LBS(INM)	110(12.4)
*CONTINUOUS STALL TORQUE	IN-LBS(INM)	2800
CONTINUOUS LINE CURRENT	AMPS(RMS/Φ)	7.1
PEAK TORQUE	IN-LBS(INM)	390(44.1)
PEAK CURRENT	AMPS(RMS/Φ)	21.3
MAX THEORETICAL ACCEL.	RAD/SEC <sup>2</sup>	35.135
TORQUE SENSITIVITY	IN-LBS/AMP(RMS/Φ)/IN-AMP(RMS/Φ)	18.3(2.06)
BACK EMF (LINE TO LINE)	Vrms/Krpm	115
D.C. RESISTANCE (P-P)	OHMS	1.5
INDUCTANCE (P-P)	MILLIHENRIES	10
ROTOR INERTIA	IN-LBS-SEC <sup>2</sup> [KG-M <sup>2</sup> ]	.0111(1.00125)
STATIC FRICTION	FT	2.4(0.27)

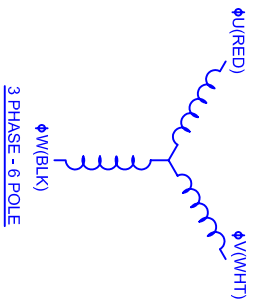
**CONNECTION CHART**

TERM	WIRE FUNCTION	WIRE COLOR	WIRE COLOR
R1	GND/SHLD	WHT/BLK	RED
R2	THERM	WHT	RED
R3	THERM	WHT	WHT
R4	SIN GND	YEL	BLK
R5	COS GND	BLK	RED
R6	COS	RED	BLU
R7	SIN	BLU	RED/WHT
R8	REF	RED/WHT	YEL/WHT
R9	REF GND	YEL/WHT	-
R10	-	-	-
R11	-	-	-

TERM	WIRE FUNCTION	WIRE COLOR
1	ΦU	RED
2	ΦV	WHT
3	ΦW	BLK
4	PE GND	GRN/YEL



**SCHEMATIC FOR BRUSHLESS RESOLVER**



**3 PHASE - 6 POLE**

<b>TOLERANCES UNLESS SPECIFIED</b>			
BORER:	= H2	RA	✓
DRILL:	= H7		
DECIMAL .xxx	± .12 (005)		
DECIMAL .xx	± .25 (010)		
DECIMAL .x	± .51 (020)		
ANGLE	± .01 (016)		
ANGLE	± .030		
<b>REMOVE ALL BURRS/BREAK SHARP EDGES AS SHOWN (0.10°)</b>			
<b>PROPRIETARY RIGHTS OF CUSTOM MOTORS ARE INCLUDED IN THE INFORMATION DISCLOSED HEREIN. THIS INFORMATION IS NOT TO BE REPRODUCED OR TRANSMITTED IN ANY FORM OR BY ANY MEANS, ELECTRONIC OR MECHANICAL, INCLUDING PHOTOCOPYING, RECORDING, OR BY ANY INFORMATION STORAGE AND RETRIEVAL SYSTEM.</b>			
CUSTOMER:	-	DRAWN:	DFLA
SCALE:	1/2:1	DATE:	6/17/04
DRAWING NO. <b>CM1421R115MKRNP1</b>		SHEET: 1 OF 1	
MATERIAL:		REV. 1	



**142MM - 1 STK**  
**460V/KE=115M/TRES/NPT**