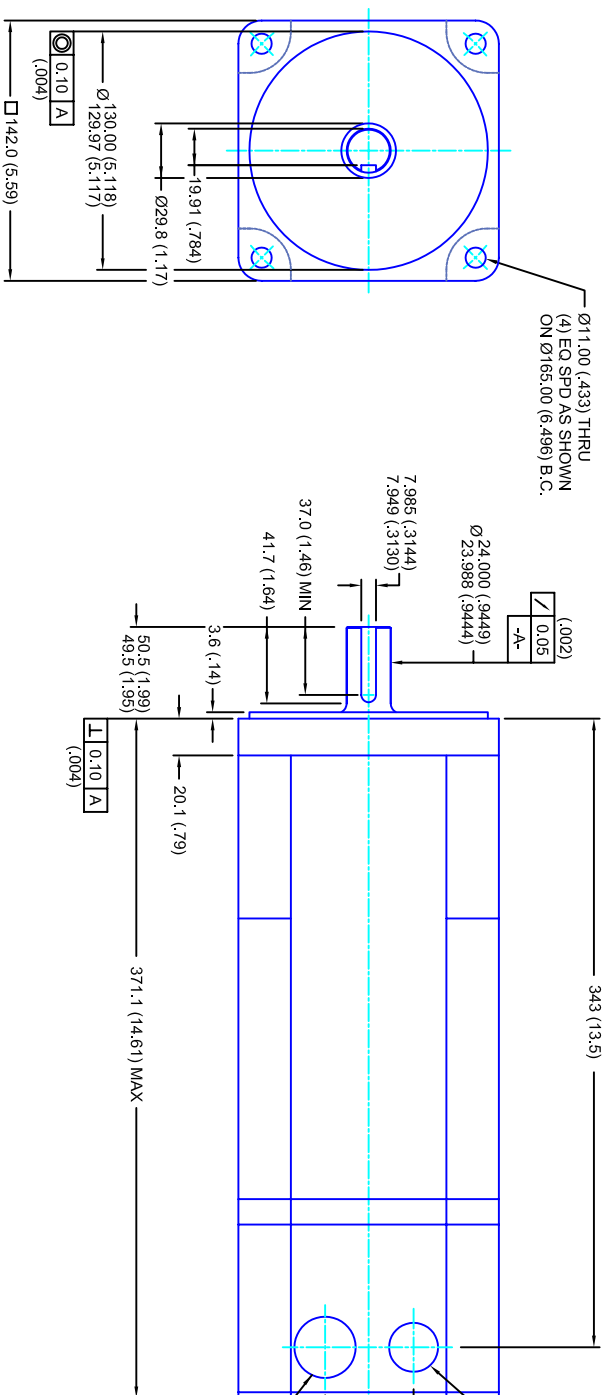


REVISIONS			
REV	DESCRIPTION	DATE	APPD
1	QUOTE DRAWING	9/7/04	



- NOTES:**
1. MILLIMETERS (INCHES)
 2. AXIAL LOAD: 23 KG [50 LBS] MAX
 3. RADIAL LOAD: 68 KG [150 LBS] MAX @ 25.4MM [1.00] FROM FACE
 4. MOTOR SEALED TO IP65
 5. MOTOR SHAFT: 416 STAINLESS STEEL
 6. MOTOR FINISH: BLACK MATT FINISH
 7. MOTOR WEIGHT 21 KG [46 LBS]

ELECTRICAL DATA

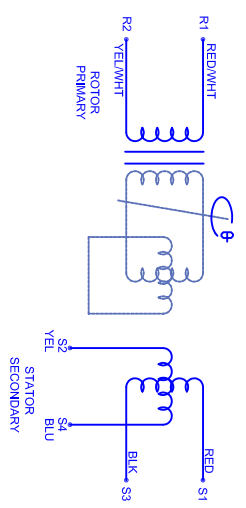
MOTOR PARAMETERS	UNITS/MEASURE	VALUES
VOLTAGE	VOLTS-AC	460
AMP TYPE		SINE
HORSEPOWER	Hp	4.9
KILOWATTS	KW	3.6
MAX OPERATING SPEED	RPM	3400
SPEED @ RATED TORQUE	RPM	2800
*CONTINUOUS RATED TORQUE @ 2800 RPM	IN-LBS(IN)	110[12.4]
*CONTINUOUS STALL TORQUE	IN-LBS(IN)	130[14.7]
CONTINUOUS LINE CURRENT	AMPS(RMS/Φ)	7.1
PEAK TORQUE	IN-LBS(IN)	390[44.1]
PEAK CURRENT	AMPS(RMS/Φ)	21.3
MAX THEORETICAL ACCEL.	RAD/SEC ²	33.913
TORQUE SENSITIVITY	KI [N-LBS/AMP/RMS/Φ]/[IN-AMP/RMS/Φ]	18.3[2.06]
BACK EMF (LINE TO LINE)	Vrms/Krpm	115
D.C. RESISTANCE (P-P)	OHMS	1.5
INDUCTANCE (P-P)	MILLIHENRIES	10
ROTOR INERTIA	IN-LBS-SEC ² [KG-M ²]	.0115[.00130] w/ Bk
STATIC FRICTION	TT	2.4[0.27]

CONNECTION CHART

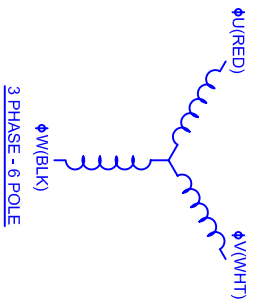
RES/THERM WIRE LEADS	WIRE FUNCTION	WIRE COLOR
R1	GND/SHLD	WHT/BLK
R2	THERM	WHT
R3	THERM	WHT
R4	SIN GND	YEL
R5	COS GND	BLK
R6	COS	RED
R7	SIN	BLU
R8	REF	RED/WHT
R9	REF GND	YEL/WHT
R10	BRK (-)	BLK
R11	BRK (+)	RED

MOTOR WIRE LEADS	WIRE FUNCTION	WIRE COLOR
1	ΦV	RED
2	ΦW	WHT
3	ΦV	BLK
4	PE GND	GRN/YEL

BRAKE INFO:
 INPUT VOLTAGE: 24 VDC
 HOLDING FORCE: 40.7 Nm [360 IN-LBS] MAX
 CURRENT DRAW: 1.13 AMPS
 RELEASE TIME: 100 ms
 INERTIA: .00041 IN-LBS-SEC²



SCHEMATIC FOR BRUSHLESS RESOLVER



CUSTOM MOTORS INC

142MM - 1 STK

FINISH:	SCALE	DATE	DRAWING NO.	DRAWN:	DRAWN:	SHEET:	REV.
REMOVE ALL BURRS/BREAK SHARP EDGES, ZAMPER (0.10°)	1/2:1	9/7/04	CM1421R115MKRNPBTB	DPLA	SHEET:	1 OF 1	1

*25°C AMBIENT WITH A MAXIMUM CASE TEMPERATURE OF 100°C ON THE MOTOR. THERMOSTAT IN STATOR WILL OPEN IF STATOR TEMPERATURE EXCEEDS 155°C. THIS WILL GIVE YOU ~10% HEADROOM IN THE CONTINUOUS TORQUE RATING BEFORE THERMOSTAT OPENS. MOTOR MOUNTED ON A 305 X 305 X 12.7MM ALUMINUM HEATSINK.