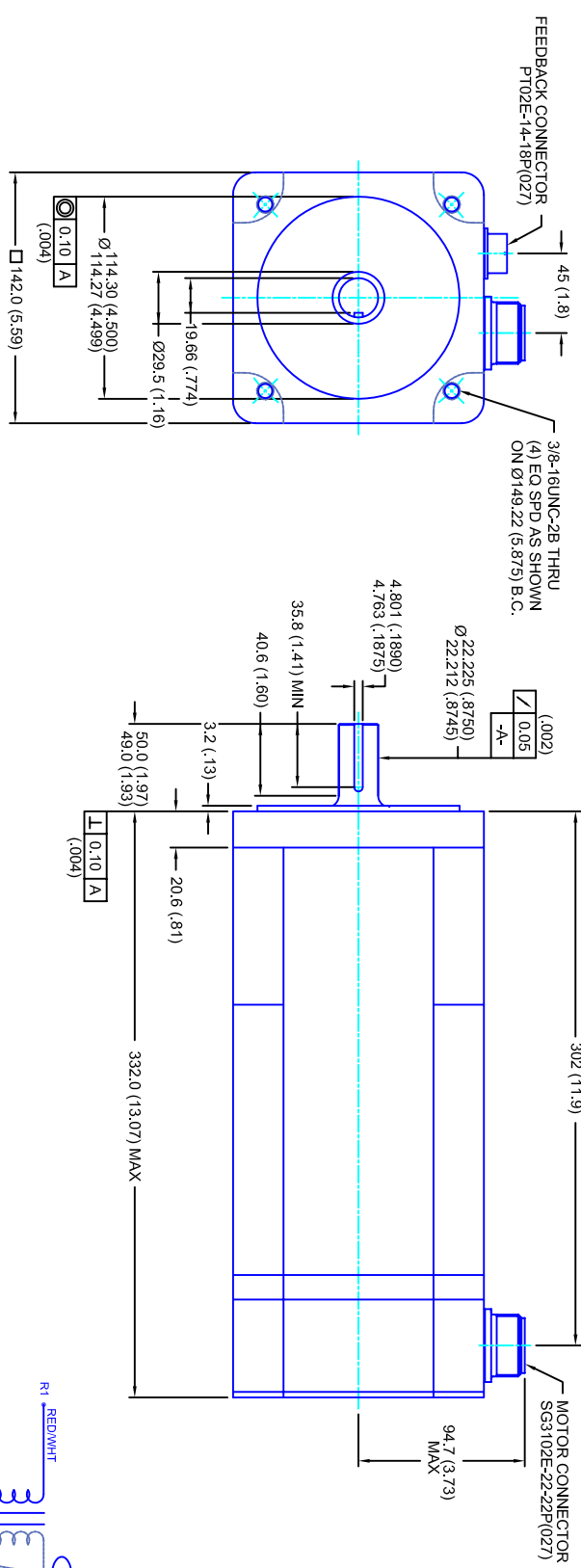


REVISIONS			
REV	DESCRIPTION	DATE	APP'D
1	QUOTE DRAWING	9/1/05	



- NOTES:**
1. MILLIMETERS (INCHES)
 2. AXIAL LOAD: 23 KG [50 LBS] MAX
 3. RADIAL LOAD: 68 KG [150 LBS] MAX @ 25.4MM [1.00] FROM FACE
 4. MOTOR SEALED TO IP65
 5. MOTOR SHAFT: 416 STAINLESS STEEL
 6. MOTOR FINISH: BLACK MATT FINISH
 7. MOTOR WEIGHT: 22.7 KG [50 LBS]

ELECTRICAL DATA

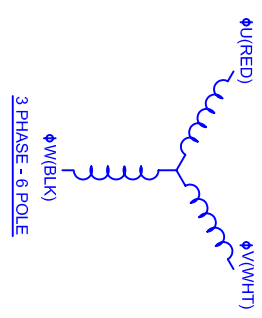
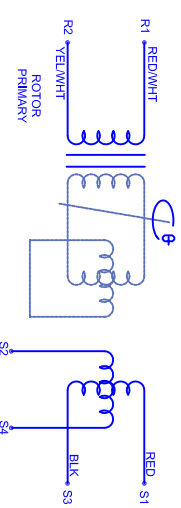
MOTOR PARAMETERS	UNITS/MEASURE	VALUES
VOLTAGE	VOLTS-AC	460
AMP TYPE	-	SINE
HORSEPOWER	Hp	12.5
KILOWATTS	KW	9.3
MAX OPERATING SPEED	RPM	5000
SPEED @ RATED TORQUE	RPM	4400
*CONTINUOUS RATED TORQUE @ 4400 RPM	IN-LBS(INM)	179(20.2)
*CONTINUOUS STALL TORQUE	IN-LBS(INM)	210(23.7)
*CONTINUOUS LINE CURRENT	AMPS(RMS/Φ)	18.9
PEAK TORQUE	IN-LBS(INM)	630(71.2)
PEAK CURRENT	AMPS(RMS/Φ)	56.8
MAX THEORETICAL ACCEL.	RAD/SEC ²	31,980
TORQUE SENSITIVITY	KI [N-LBS/AMP/RMS/Φ] / (IN-AMP/RMS/Φ)	11.1 [1.26]
BACK EMF (LINE TO LINE)	Vrms/Krpm	70
D.C. RESISTANCE (P-P)	OHMS	.20
INDUCTANCE (P-P)	MILLIHENRIES	1.6
ROTOR INERTIA	IN-LBS-SEC ² [KG-M ²]	.0197 [0.00223]
STATIC FRICTION	TT	3.0 [0.34]

CONNECTION CHART

REST/ THERM WIRE LEADS	WIRE FUNCTION	WIRE COLOR
A	-	-
B	-	-
C	-	-
D	RES SHLD	WHT/BLK
E	REF	RED/WHT
F	SIN GND	YEL
G	COS GND	BLK
H	SIN	BLU
J	-	-
K	-	-
L	-	-
M	-	-
N	THERM	WHT
P	-	-
R	REF GND	YEL/WHT
S	COS	RED
T	-	-
U	THERM	WHT

SG3102E-22-22P(027)

MOTOR WIRE LEADS	WIRE FUNCTION	WIRE COLOR
A	ΦU	RED
B	ΦV	WHT
C	ΦW	BLK
D	PE GND	GRN/YEL



TOLERANCES UNLESS SPECIFIED

BORER: = H12 ✓
 SURFACE FINISH: = 63 Ra ✓
 DECIMAL .xxx ±.12 (.005)
 DECIMAL .xx ±.25 (.010)
 DECIMAL .x ±.51 (.020)
 FRACTION ±.001 (.001)
 ANGLE (MM INCHES) ±.030

REMOVE ALL BURRS/BREAK SHARP EDGES AS SHOWN (0.10°)

PROPRIETARY RIGHTS OF CUSTOM MOTORS ARE INCLUDED IN THE INFORMATION DISCLOSED HEREIN. THIS INFORMATION DOES NOT BE REPRODUCED OR TRANSMITTED IN ANY FORM OR BY ANY MEANS, ELECTRONIC OR MECHANICAL, INCLUDING PHOTOCOPYING, RECORDING, OR BY ANY INFORMATION STORAGE AND RETRIEVAL SYSTEM.

CUSTOMER: - DATE: 9/1/05 DRAWING NO: CM1422R70EKRC3 DRAWN: DFLA SHEET: 1 OF 1

SCALE: 1/2:1

REV. 1



142MM - 2 STK
 460V/KE-70/ENG/RES/CONN