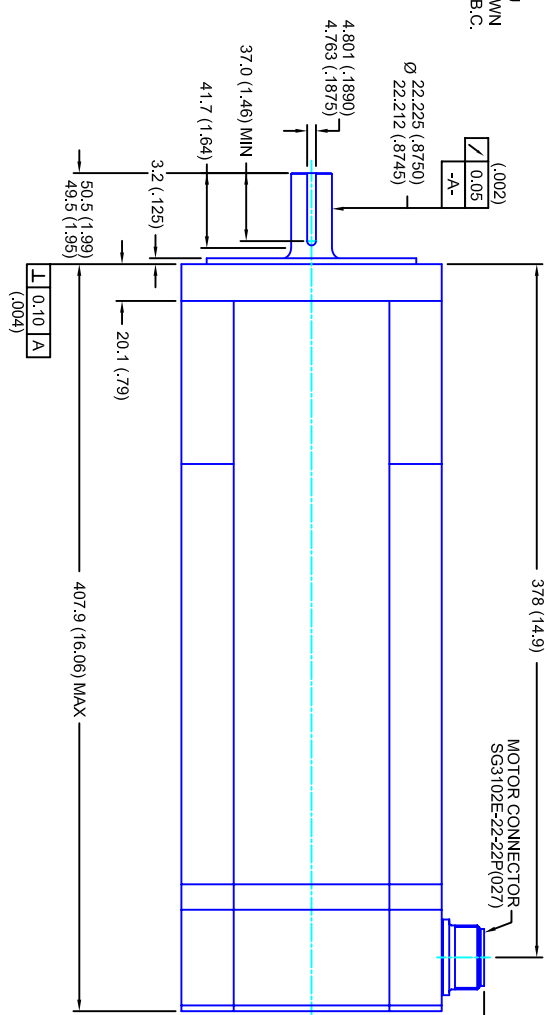
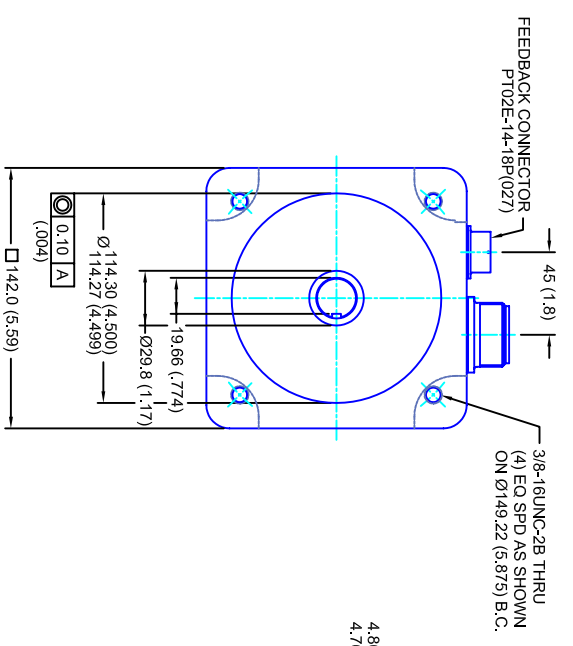


REVISIONS			
REV	DESCRIPTION	DATE	APPD
1	RELEASE DRAWING	6/17/04	



- NOTES:**
1. MILLIMETERS (INCHES)
 2. AXIAL LOAD: 23 KG [50 LBS] MAX
 3. RADIAL LOAD: 68 KG [150 LBS] MAX @ 25.4MM [1.00] FROM FACE
 4. MOTOR SEALED TO IP65
 5. MOTOR SHAFT: 416 STAINLESS STEEL
 6. MOTOR FINISH: BLACK MATT FINISH
 7. MOTOR WEIGHT: 30.4 KG [67 LBS]

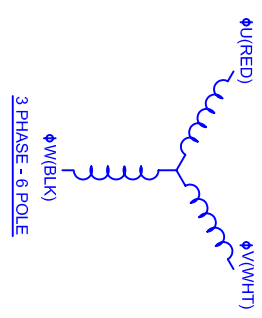
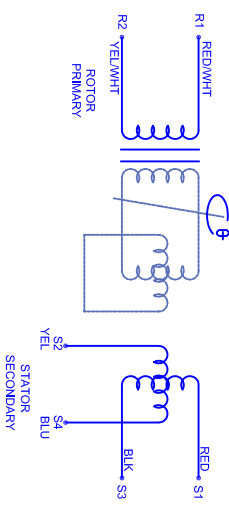
ELECTRICAL DATA

MOTOR PARAMETERS	UNITS/MEASURE	VALUES
VOLTAGE	VOLTS-AC	230
AMP TYPE	-	SINE
HORSEPOWER	HP	6.0
KILOWATTS	KW	4.5
MAX OPERATING SPEED	RPM	1750
SPEED @ RATED TORQUE	RPM	1500
*CONTINUOUS RATED TORQUE @ 1500 RPM	IN-LBS(INM)	252(28.5)
*CONTINUOUS STALL TORQUE	IN-LBS(INM)	280(31.6)
*CONTINUOUS LINE CURRENT	AMPS(RMS/Φ)	15.3
PEAK TORQUE	IN-LBS(INM)	840(94.9)
PEAK CURRENT	AMPS(RMS/Φ)	48.6
MAX THEORETICAL ACCEL.	RAD/SEC ²	29,288
TORQUE SENSITIVITY	KI [N-LBS/AMP/RMS/Φ]/(MM/AMP/RMS/Φ)	18.3(2.06)
BACK EMF (LINE TO LINE)	Vrms/Krpm	115
D.C. RESISTANCE (P-P)	OHMS	TBD
INDUCTANCE (P-P)	MILLIHENRIES	TBD
ROTOR INERTIA	IN-LBS-SEC ² [KG-M ²]	.0287(.00324)
STATIC FRICTION	TT	3.6(0.41)

CONNECTION CHART

REST/THERM WIRE LEADS	WIRE FUNCTION	WIRE COLOR
A	-	-
B	-	-
C	-	-
D	RES SHLD	WHT/BLK
E	REF	RED/WHT
F	SIN GND	YEL
G	COS GND	BLK
H	SIN	BLU
J	-	-
K	-	-
L	-	-
M	-	-
N	THERM	WHT
P	-	-
R	REF GND	YEL/WHT
S	COS	RED
T	-	-
U	THERM	WHT

MOTOR WIRE LEADS	WIRE FUNCTION	WIRE COLOR
A	ΦU	RED
B	ΦV	WHT
C	ΦW	BLK
D	PE GND	GRN/YEL



142MM - 3 STK
230V/KE=115/ENG/RES/CONN

TOLERANCES UNLESS SPECIFIED					
BORER:	= H2 ✓				
BORE:	= H12 ✓				
DECIMAL .xxx	± .12 (005)				
DECIMAL .xx	± .25 (010)				
DECIMAL .x	± .51 (020)				
DECIMAL .	± .40 (016)				
ANGLE	± .030				
REMOVE ALL BURRS/BREAK SHARP EDGES AS SHOWN (0.10°)					
FINISH:					
WATERFALL:					
SCALE	DATE	DRAWING NO.	DRAWN: DFLA	SHEET: 1 OF 1	REV.
1/2:1	2/9/04	CM14230Q115EKRCS			1