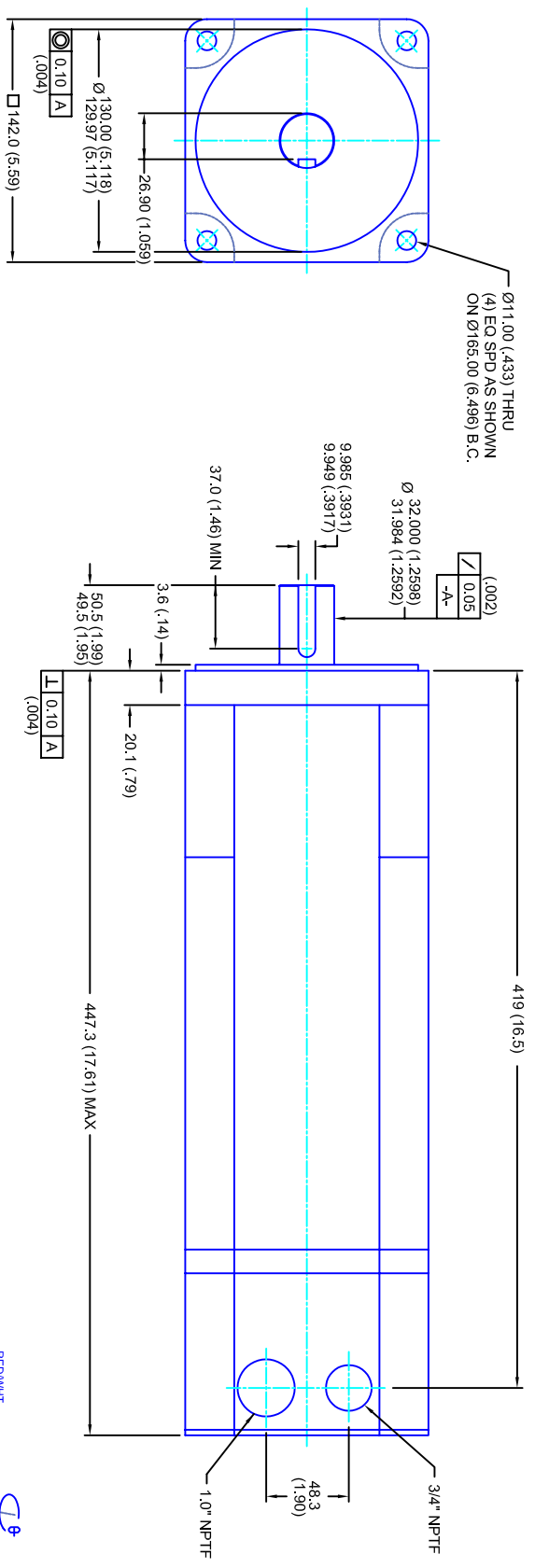


REVISIONS			
REV	DESCRIPTION	DATE	APPD
1	QUOTE DRAWING	3/17/05	



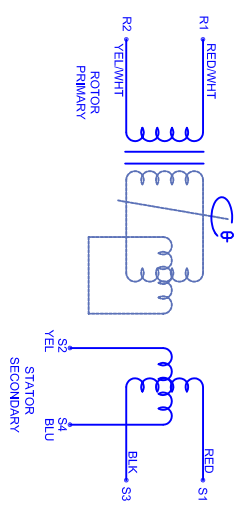
- NOTES:**
1. MILLIMETERS (INCHES)
  2. AXIAL LOAD: 23 KG [ 50 LBS ] MAX
  3. RADIAL LOAD: 68 KG [ 150 LBS ] MAX @ 25.4MM [ 1.00 ] FROM FACE
  4. MOTOR SEALED TO IP65
  5. MOTOR SHAFT: 416 STAINLESS STEEL
  6. MOTOR FINISH: BLACK MATT FINISH
  7. MOTOR WEIGHT: 31.3 KG [ 69 LBS ]

**ELECTRICAL DATA**

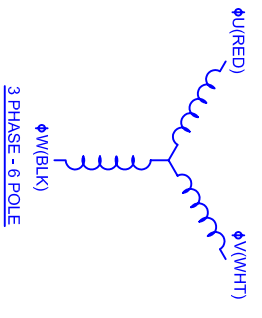
MOTOR PARAMETERS	UNITS/MEASURE	VALUES
VOLTAGE	VOLTS-AC	230
AMP TYPE	-	SINE
HORSEPOWER	HP	9.1
KILOWATTS	KW	6.8
MAX OPERATING SPEED	RPM	2700
SPEED @ RATED TORQUE	RPM	2400
*CONTINUOUS RATED TORQUE @ 2400 RPM	IN-LBS(INM)	238/26.91
*CONTINUOUS STALL TORQUE	IN-LBS(INM)	280/31.61
*CONTINUOUS LINE CURRENT	AMPS(RMS/Φ)	22.0
PEAK TORQUE	IN-LBS(INM)	840/94.91
PEAK CURRENT	AMPS(RMS/Φ)	66.1
MAX THEORETICAL ACCEL.	RAD/SEC <sup>2</sup>	29,288
TORQUE SENSITIVITY	KI [N-LBS/AMP/RMS/Φ]/(NIN/AMP/RMS/Φ)	12.7/1.44
BACK EMF (LINE TO LINE)	Vrms/Krpm	80
D.C. RESISTANCE (P-P)	OHMS	.17
INDUCTANCE (P-P)	MILLIHENRIES	1.5
ROTOR INERTIA	Jm	.02871(.00324)
STATIC FRICTION	TT	3.6/0.411

**CONNECTION CHART**

RES/THERM WIRE LEADS	WIRE FUNCTION	WIRE COLOR	TERM	WIRE FUNCTION	WIRE COLOR
R1	GND/SHLD	WHT/BLK	1	ΦU	RED
R2	THERM	WHT	2	ΦV	WHT
R3	THERM	WHT	3	ΦW	BLK
R4	SIN GND	YEL	4	PE GND	GRN/YEL
R5	COS GND	BLK			
R6	COS	RED			
R7	SIN	BLU			
R8	REF	RED/WHT			
R9	REF GND	YEL/WHT			
R10	-	-			
R11	-	-			



**SCHEMATIC FOR BRUSHLESS RESOLVER**



**CUSTOM MOTORS INC**

**142MM - 3 STK**  
**230V/KE-80/MET/RES/NPT**

TOLERANCES UNLESS SPECIFIED	
BORER:	= H2
BORE:	= H12
DECIMAL .xxx	= .12 (.005)
DECIMAL .xx	= .25 (.010)
DECIMAL .x	= .51 (.020)
DECIMAL .	= 1.01 (.040)
ANGLE	= 0.80
REMOVE ALL BURRS/BREAK SHARP EDGES AS SHOWN (0.10°)	
FINISH:	AS SHOWN
WATERFALL:	AS SHOWN
SCALE	1/2:1
DATE	6/17/04
DRAWING NO.	CW1423Q80MKRNP
CUSTOMER:	-
DRAWN:	DFLA
SHEET:	1 OF 1
REV.	1