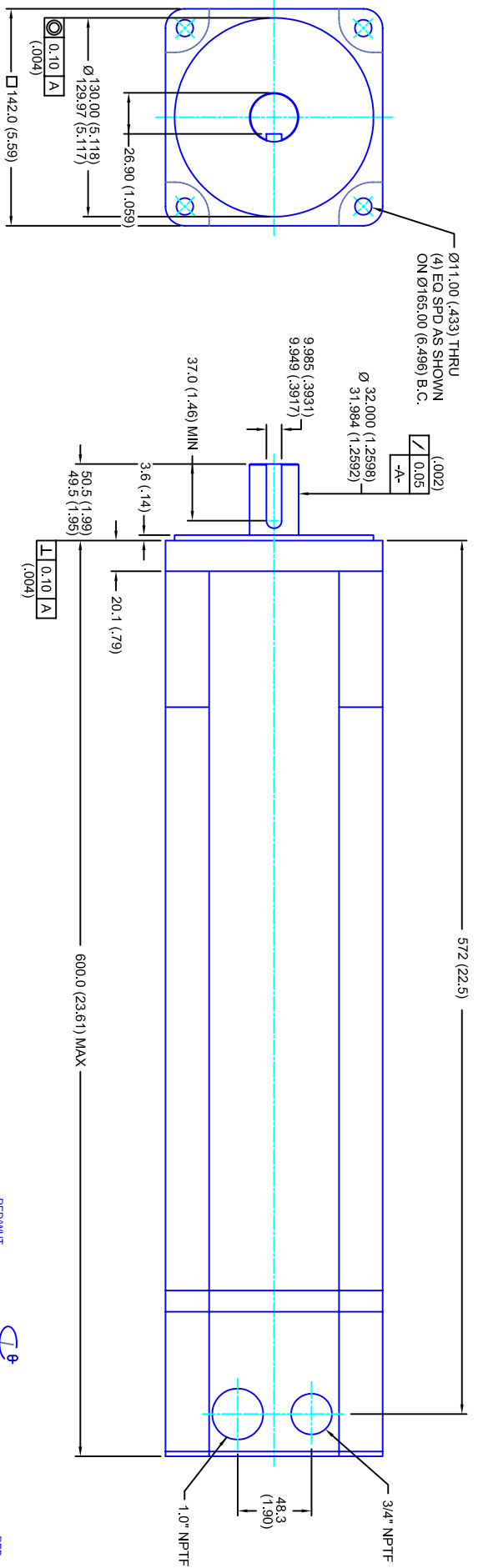


REVISIONS			
REV	DESCRIPTION	DATE	APPD
1	QUOTE DRAWING	2/28/05	



- NOTES:**
- MILLIMETERS (INCHES)
  - AXIAL LOAD: 23 KG [ 50 LBS ] MAX
  - RADIAL LOAD: 68 KG [ 150 LBS ] MAX @ 25.4MM [ 1.00] FROM FACE
  - MOTOR SEALED TO IP65
  - MOTOR SHAFT: 416 STAINLESS STEEL
  - MOTOR FINISH: BLACK MATT FINISH
  - MOTOR WEIGHT: 44.5 KG [ 98 LBS ]

**ELECTRICAL DATA**

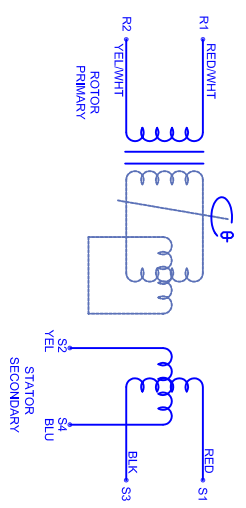
MOTOR PARAMETERS	UNITS/MEASURE	VALUES
VOLTAGE	VOLTS-AC	460
AMP TYPE	-	SINE
HORSEPOWER	HP	12.4
KILOWATTS	KW	9.3
MAX OPERATING SPEED	RPM	3400
SPEED @ RATED TORQUE	RPM	2800
*CONTINUOUS RATED TORQUE @ 2800 RPM	IN-LBS(IN)M	280(121.6)
*CONTINUOUS LINE CURRENT	AMPS(RMS/Φ)	19.7
PEAK TORQUE	IN-LBS(IN)M	108(1122.1)
PEAK CURRENT	AMPS(RMS/Φ)	59.1
MAX THEORETICAL ACCEL.	RAD/SEC <sup>2</sup>	28,904
TORQUE SENSITIVITY	KI [N-LS/AMP/RMS/Φ]/(IN-AMP/RMS/Φ)	18.3(2.06)
BACK EMF (LINE TO LINE)	Vrms/Krpm	115
D.C. RESISTANCE (P-P)	OHMS	.22
INDUCTANCE (P-P)	MILLIHENRIES	1.9
ROTOR INERTIA	IN-LBS-SEC <sup>2</sup> [KG-M <sup>2</sup> ]	.0374(.00423) w/ Brk
STATIC FRICTION	TT	4.2(0.47)

**CONNECTION CHART**

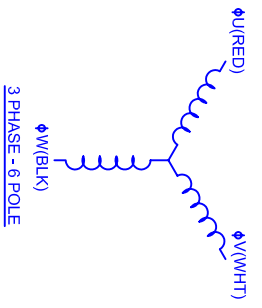
RES/THERM WIRE LEADS	WIRE FUNCTION	WIRE COLOR
R1	GND/SHLD	WHT/BLK
R2	THERM	WHT
R3	SIN	YEL
R4	COS	BLK
R5	SIN	BLU
R6	COS	RED
R7	REF	RED/WHT
R8	REF	YEL/WHT
R9	BRK (-)	BLK
R10	BRK (+)	RED

MOTOR WIRE LEADS	WIRE FUNCTION	WIRE COLOR
1	ΦV	RED
2	ΦV	WHT
3	ΦW	BLK
4	PE GND	GRN/YEL

**BRAKE INFO:**  
 INPUT VOLTAGE: 24 VDC  
 HOLDING FORCE: 40.7 Nm [ 360 IN-LBS ] MAX  
 CURRENT DRAW: 1.13 AMPS  
 RELEASING TIME: 100 ms  
 INERTIA: .00041 IN-LBS-SEC<sup>2</sup>



**SCHEMATIC FOR BRUSHLESS RESOLVER**



**142MM - 4 STK**  
**460V/KE=115M/ET/RES/NP/BRK**

TOLERANCES UNLESS SPECIFIED	
BORER:	= H2
DECIMAL .xxx	= .12 (.005)
DECIMAL .xx	= .25 (.010)
DECIMAL .x	= .51 (.020)
ANGLE	= .40 (.016)
ANGLE	= .030
REMOVE ALL BURRS/BREAK SHARP EDGES, ZAMER (0.10°)	
FINISH:	
WATERAL:	
SCALE	1/2:1
DATE	9/7/04
DRAWING NO.	CM1424R115MKRNP/PTB
CUSTOMER:	-
DRAWN:	DFLA
SHEET:	1 OF 1
REV.	1