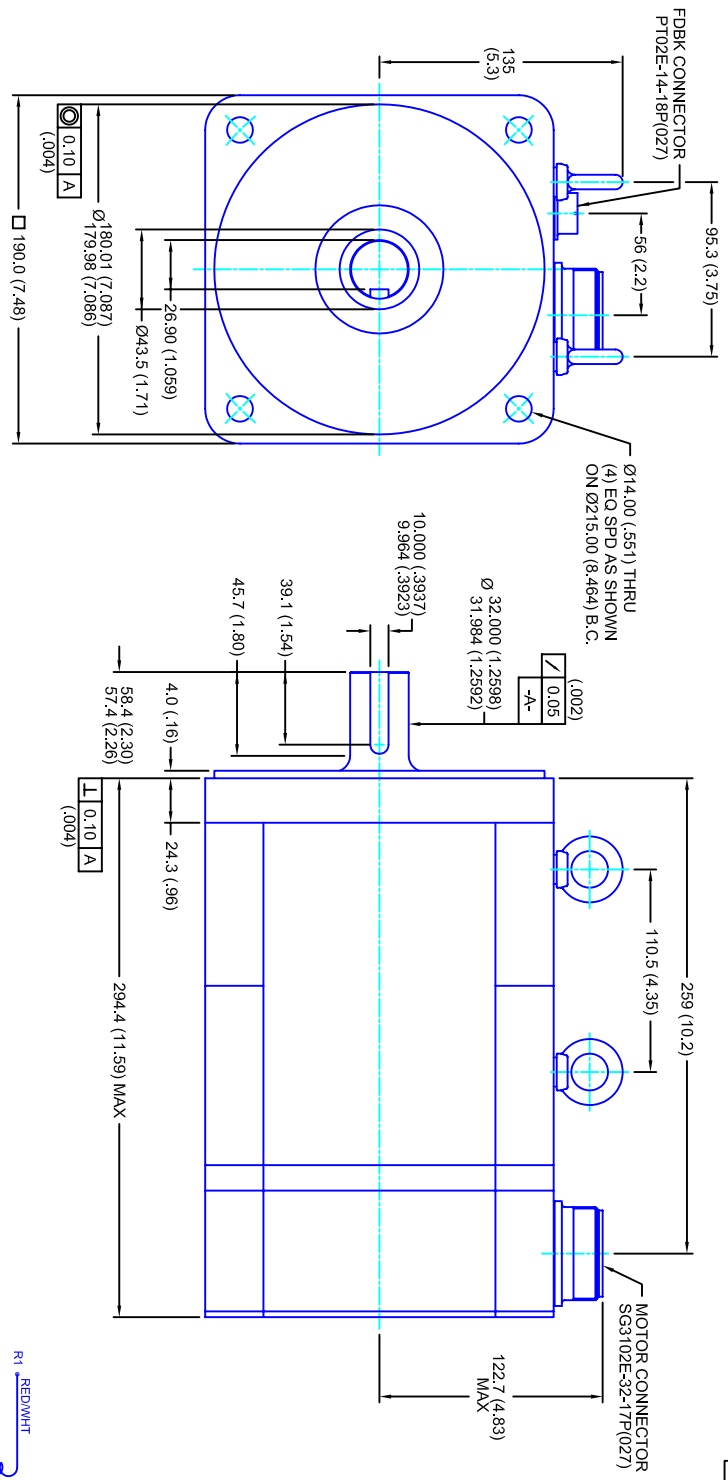


REVISIONS			
REV	DESCRIPTION	DATE	APP'D
1	QUOTE DRAWING	6/25/04	



- NOTES:**
1. MILLIMETERS (INCHES)
 2. AXIAL LOAD: 45 KG [100 LBS] MAX
 3. RADIAL LOAD: 113 KG [250 LBS] MAX @ 25.4MM [1.00] FROM FACE
 4. MOTOR SEALED TO IP65
 5. MOTOR SHAFT: G&P STEEL, GRADE 1144
 6. MOTOR FINISH: BLACK MATT FINISH
 7. MOTOR WEIGHT: 30 KG [66 LBS]

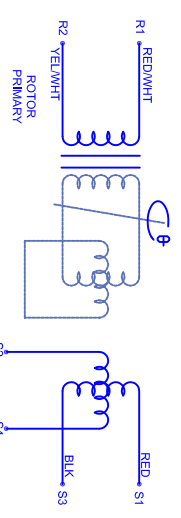
ELECTRICAL DATA

MOTOR PARAMETERS	UNITS/MEASURE	VALUES
VOLTAGE	VOLTS-AC	230
AMP TYPE	-	SINE
HORSEPOWER	Hp	13.1
KILOWATTS	KW	9.8
MAX OPERATING SPEED	RPM	3000
SPEED @ RATED TORQUE	RPM	2400
*CONTINUOUS RATED TORQUE @ 2400 RPM	IN-LBS(INM)	344[138.9]
*CONTINUOUS STALL TORQUE	IN-LBS(INM)	400[45.2]
*CONTINUOUS LINE CURRENT	AMPS(RMS/Φ)	31.5
PEAK TORQUE	IN-LBS(INM)	1200[135.6]
PEAK CURRENT	AMPS(RMS/Φ)	94.5
MAX THEORETICAL ACCEL.	RAD/SEC ²	27,778
TORQUE SENSITIVITY	KI [N-LBS/AMP(RMS/Φ)/MIN(AMP(RMS/Φ))]	12.7[1.44]
BACK EMF (LINE TO LINE)	Vrms/Krpm	80
D.C. RESISTANCE (P-P)	OHMS	.25
INDUCTANCE (P-P)	MILLIHENRIES	2.3
ROTOR INERTIA	IN-LBS-SEC ² [KG-M ²]	.0432[.00488]
STATIC FRICTION	TT	8.2[.93]

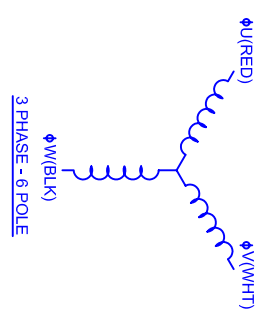
CONNECTION CHART

PT02E-14-18P(027)			
REST/TERM WIRE LEADS	WIRE FUNCTION	WIRE COLOR	
A	-	-	
B	-	-	
C	-	-	
D	RES SHLD	WHT/BLK	
E	REF	RED/WHT	
F	SIN GND	YEL	
G	COS GND	BLK	
H	SIN	BLU	
J	-	-	
K	-	-	
L	-	-	
M	-	-	
N	TERM	WHT	
P	-	-	
R	REF GND	YEL/WHT	
S	COS	RED	
T	-	-	
U	TERM	WHT	

SG3102E-32-17P(027)			
MOTOR WIRE LEADS	WIRE FUNCTION	WIRE COLOR	
A	Φ U	RED	
B	Φ V	WHT	
C	Φ W	BLK	
D	PE GND	GRN/YEL	



SCHEMATIC FOR BRUSHLESS RESOLVER



CUSTOM MOTORS INC

190MM - 1 STK
230V/KE=80/MET/RES/CONN

TOLERANCES UNLESS SPECIFIED							
BORER:	= H2						
DECIMAL .xxx	±.12 (.005)						
DECIMAL .xx	±.25 (.010)						
DECIMAL .x	±.51 (.020)						
ANGLE	±.40 (.016)						
ANGLE	±.09						
REMOVE ALL BURRS/BREAK SHARP EDGES AS SHOWN (0.10°)							
FINISH:							
WATERL:							
SCALE	DATE	DRAWING NO.	CUSTOMER:	DRAWN:	DFLA	SHEET: 1 OF 1	REV.
1/2:1	5/2/04	CM1901Q80MKRCS					1