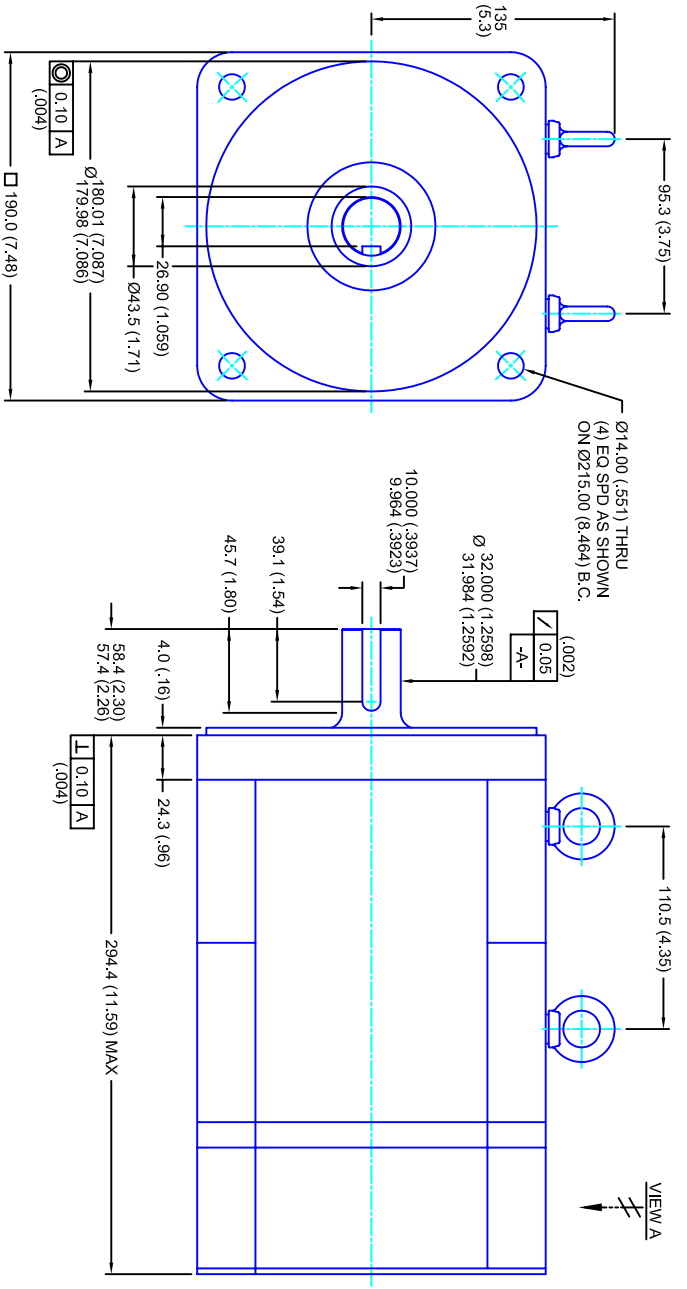


REVISIONS		
REV	DESCRIPTION	DATE
1	QUOTE DRAWING	6/21/04



- NOTES:**
1. MILLIMETERS (INCHES)
  2. AXIAL LOAD: 45 KG [100 LBS ] MAX
  3. RADIAL LOAD: 113 KG [250 LBS ] MAX @ 25.4MM [1.00] FROM FACE
  4. MOTOR SEALED TO IP65
  5. MOTOR SHAFT: G&P STEEL, GRADE 1144
  6. MOTOR FINISH: BLACK MATT FINISH
  7. MOTOR WEIGHT: 30 KG [66 LBS ]

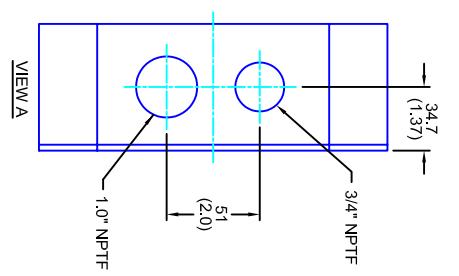
**ELECTRICAL DATA**

MOTOR PARAMETERS	UNITS/MEASURE	VALUES
VOLTAGE	VOLTS-AC	230
AMP TYPE	-	SINE
HORSEPOWER	HP	13.1
KILOWATTS	KW	9.8
MAX OPERATING SPEED	RPM	3000
SPEED @ RATED TORQUE	RPM	2400
*CONTINUOUS RATED TORQUE @ 2400 RPM	IN-LBS(INM)	344(138.9)
*CONTINUOUS STALL TORQUE	IN-LBS(INM)	400(145.2)
CONTINUOUS LINE CURRENT	AMP(S/RMS/Φ)	31.5
PEAK TORQUE	IN-LBS(INM)	1200(135.6)
PEAK CURRENT	AMP(S/RMS/Φ)	94.5
MAX THEORETICAL ACCEL.	RAD/SEC <sup>2</sup>	27,778
TORQUE SENSITIVITY	KI [N-LBS/AMP/RMS/Φ]/(MM/AMP/RMS/Φ)	12.7(1.44)
BACK EMF (LINE TO LINE)	Vrms/Krpm	80
D.C. RESISTANCE (P-P)	OHMS	.25
INDUCTANCE (P-P)	MILLIHENRIES	2.3
ROTOR INERTIA	IN-LBS-SEC <sup>2</sup> [KG-M <sup>2</sup> ]	.0432(.00488)
STATIC FRICTION	TT	82(.93)

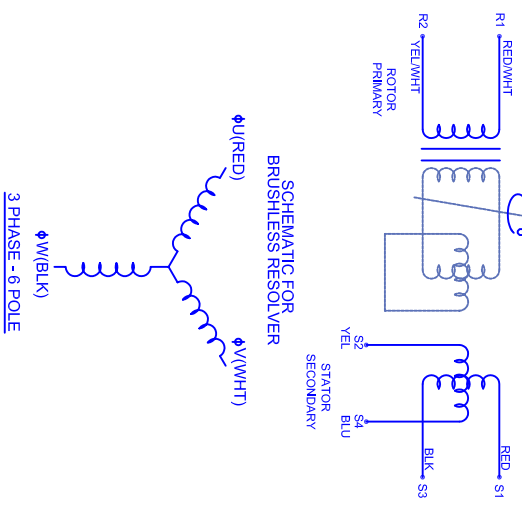
**CONNECTION CHART**

RES/THERM WIRE LEADS	WIRE FUNCTION	WIRE COLOR	TERMINAL FUNCTION	WIRE COLOR
R1	SHLD	WHT/BLK	1	RED
R2	THERM	WHT	2	WHT
R3	THERM	WHT	3	WHT
R4	SIN GND	YEL	Φ V	BLK
R5	COS GND	BLK	PE GND	GRN/YEL
R6	COS	RED		
R7	SIN	BLU		
R8	REF	RED/WHT		
R9	REF GND	YEL/WHT		
R10	-	-		
R11	-	-		

MOTOR WIRE LEADS	WIRE FUNCTION	WIRE COLOR
1	Φ U	RED
2	Φ V	WHT
3	Φ W	BLK
-	PE GND	GRN/YEL



**SCHEMATIC FOR BRUSHLESS RESOLVER**



**190MM - 1 STK**  
**230V/KE-80MMETRES/NPT**  
**CUSTOM MOTORS INC**

FINISH:	SCALE	DATE	DRAWING NO.	CUSTOMER:	DRAWN:	DRAWN SHEET:	REV.
REMOVE ALL BURRS, BREAK SHARP EDGES, ZAMPER (0.10) <td>1/2:1</td> <td>5/13/04</td> <td>CW1901Q80MKRNP1</td> <td>-</td> <td>DFLA</td> <td>1 OF 1</td> <td>1</td>	1/2:1	5/13/04	CW1901Q80MKRNP1	-	DFLA	1 OF 1	1