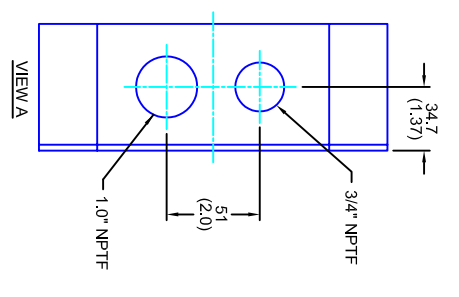
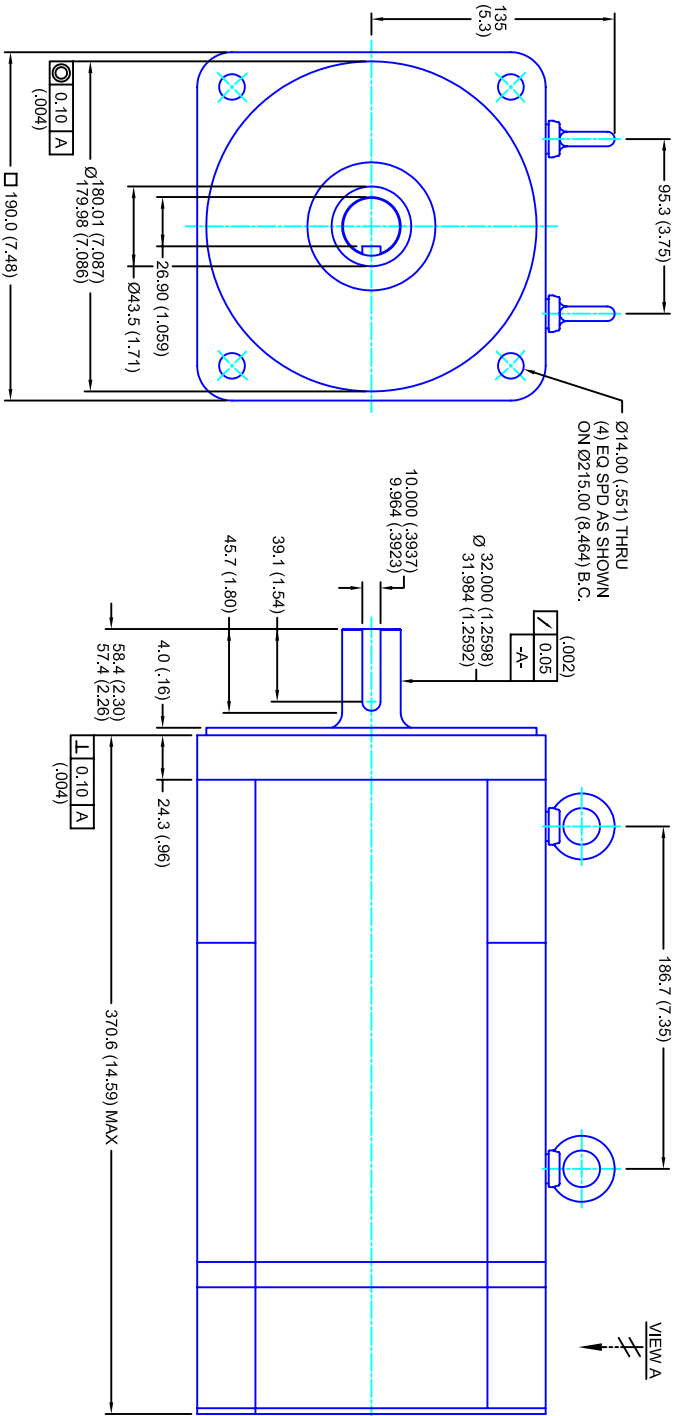


REVISIONS			
REV	DESCRIPTION	DATE	APPD
1	RELEASE DRAWING	11/3/05	



- NOTES:**
1. MILLIMETERS (INCHES)
 2. AXIAL LOAD: 45 KG [100 LBS] MAX
 3. RADIAL LOAD: 113 KG [250 LBS] MAX @ 25.4 [1.00] FROM FACE
 4. MOTOR SEALED TO IP65
 5. MOTOR SHAFT: G&P STEEL, GRADE 1144
 6. MOTOR FINISH: BLACK MATT FINISH
 7. MOTOR WEIGHT: 44 KG [98 LBS]

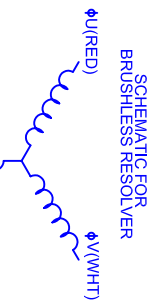
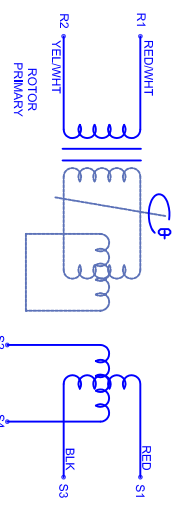
ELECTRICAL DATA

MOTOR PARAMETERS	UNITS/MEASURE	VALUES
VOLTAGE	VOLTS-AC	230
AMP TYPE	-	SINE
HORSEPOWER	HP	10.5
KILOWATTS	KW	7.8
MAX OPERATING SPEED	RPM	1400
SPEED @ RATED TORQUE	RPM	1200
*CONTINUOUS RATED TORQUE @ 1200 RPM	IN-LBS(INM)	550(62.1)
*CONTINUOUS STALL TORQUE	IN-LBS(INM)	640(72.3)
*CONTINUOUS LINE CURRENT	AMPS(RMS/Φ)	24.9
PEAK TORQUE	IN-LBS(INM)	1920(216.9)
PEAK CURRENT	AMPS(RMS/Φ)	74.7
MAX THEORETICAL ACCEL.	RAD/SEC ²	25,600
TORQUE SENSITIVITY	KI [N-BS/AMP/RMS/Φ]/(NINM/AMP/RMS/Φ)	25.7(2.91)
BACK EMF (LINE TO LINE)	Vrms/Krpm	162
D.C. RESISTANCE (P-P)	OHMS	.36
INDUCTANCE (P-P)	MILLIHENRIES	4.0
ROTOR INERTIA	Jm	.0750(.00847)
STATIC FRICTION	TT	9.8(1.1)

CONNECTION CHART

RES/THERM WIRE LEADS	WIRE FUNCTION	WIRE COLOR
R1	SHLD	WHT/BLK
R2	THERM	WHT
R3	THERM	WHT
R4	SIN GND	YEL
R5	COS GND	BLK
R6	COS	RED
R7	SIN	BLU
R8	REF	RED/WHT
R9	REF GND	YEL/WHT
R10	-	-
R11	-	-

MOTOR WIRE LEADS	WIRE FUNCTION	WIRE COLOR
1	Φ U	RED
2	Φ V	WHT
3	Φ W	BLK
-	PE GND	GRN/YEL



TOLERANCES UNLESS SPECIFIED

BORER: = H12 ✓
 SURFACE FINISH: = H12 ✓
 DECIMAL .xxx = ±.12 (.005)
 DECIMAL .xx = ±.25 (.010)
 DECIMAL .x = ±.51 (.020)
 DECIMAL . = ±.40 (.016)
 ANGLE (MM/INCHES) = 0.98

REMOVE ALL BURRS/BREAK SHARP EDGES AS SHOWN (0.10°)

PROPRIETARY RIGHTS OF CUSTOM MOTORS ARE INCLUDED IN THE INFORMATION DISCLOSED HEREIN. THIS INFORMATION IS NOT TO BE REPRODUCED OR TRANSMITTED IN ANY FORM OR BY ANY MEANS, ELECTRONIC OR MECHANICAL, INCLUDING PHOTOCOPYING, RECORDING, OR BY ANY INFORMATION STORAGE AND RETRIEVAL SYSTEM.

CUSTOMER: - DRAWING NO. **CW1902Q162MKRNPT** DRAWN: DFLA SHEET: 1 OF 1

SCALE: 1/2:1 DATE: 9/7/04 DRAWING NO. **190MM - 2 STK**

FINISH: CUSTOM MOTORS INC

230V/KE=162METRES/NPT