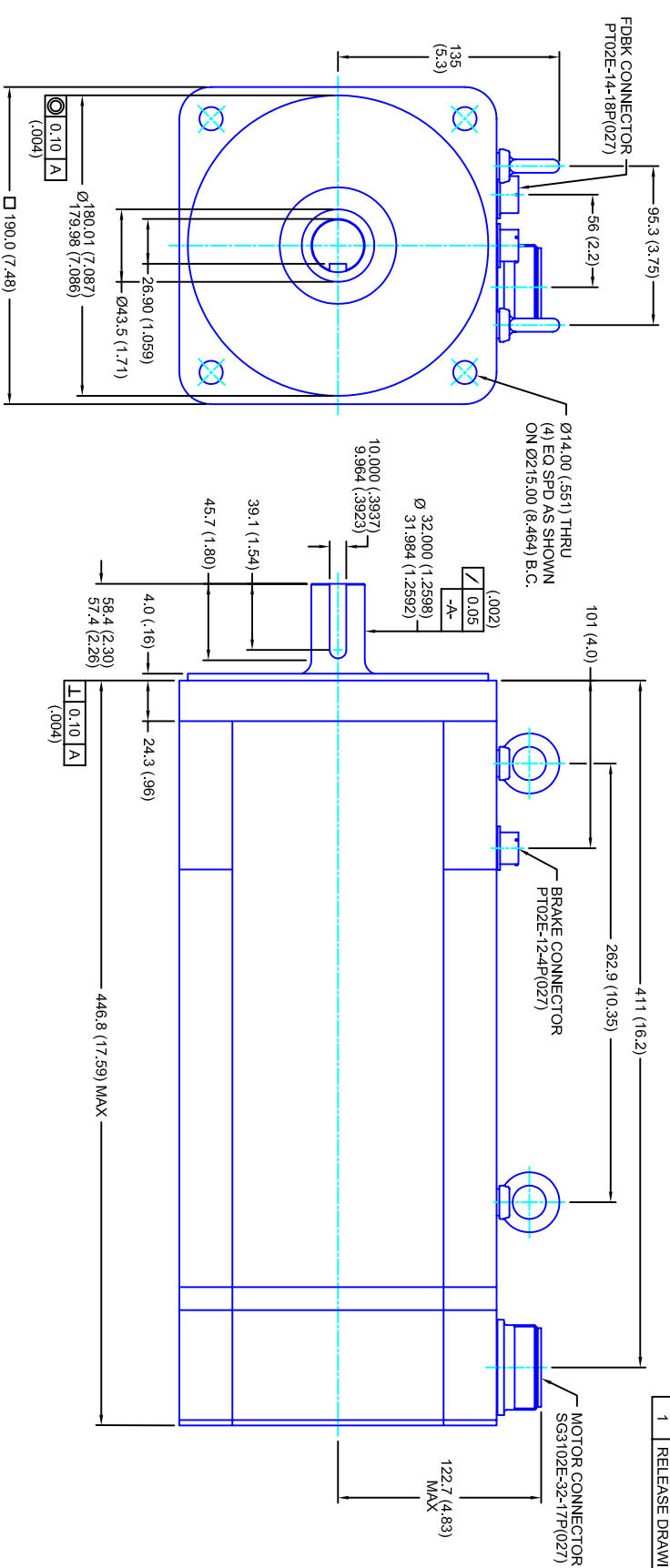


REVISIONS			
REV	DESCRIPTION	DATE	APPD
1	RELEASE DRAWING	11/3/05	



- NOTES:**
1. MILLIMETERS (INCHES)
 2. AXIAL LOAD: 45 KG [100 LBS] MAX
 3. RADIAL LOAD: 113 KG [250 LBS] MAX @ 25.4MM [1.00] FROM FACE
 4. MOTOR SEALED TO IP65
 5. MOTOR SHAFT: G&P STEEL, GRADE 1144
 6. MOTOR FINISH: BLACK MATT FINISH
 7. MOTOR WEIGHT: 55 KG [121 LBS]

ELECTRICAL DATA

MOTOR PARAMETERS	UNITS/MEASURE	VALUES
VOLTAGE	VOLTS-AC	460
AMP TYPE	-	SINE
HORSEPOWER	HP	20.9
KILOWATTS	KW	15.6
MAX OPERATING SPEED	RPM	2850
SPEED @ RATED TORQUE	RPM	2400
*CONTINUOUS RATED TORQUE @ 2400 RPM	IN-LBS(INM)	550(62.1)
*CONTINUOUS STALL TORQUE	IN-LBS(INM)	640(72.3)
*CONTINUOUS LINE CURRENT	AMPS(RMS/Φ)	24.9
PEAK TORQUE	IN-LBS(INM)	1920(216.9)
PEAK CURRENT	AMPS(RMS/Φ)	74.7
MAX THEORETICAL ACCEL.	RAD/SEC ²	25,098
TORQUE SENSITIVITY	KI [N-LS/AMP/RMS/Φ] [IN-AMP/RMS/Φ]	25.7(2.91)
BACK EMF (LINE TO LINE)	±10% OHMS	162
D.C. RESISTANCE (P-P)	±10% OHMS	.36
INDUCTANCE (P-P)	MILLIHENRIES	4.0
ROTOR INERTIA	IN-LBS-SEC ² [KG-M ²]	.0765(0.0864) W/BLK
STATIC FRICTION	TT	9.8(1.1)

*25°C AMBIENT WITH A MAXIMUM CASE TEMPERATURE OF 100°C ON THE MOTOR. THERMOSTAT IN STATOR WILL OPEN IF STATOR TEMPERATURE EXCEEDS 155°C. THIS WILL GIVE YOU ~10% HEADROOM IN THE CONTINUOUS TORQUE RATING BEFORE THERMOSTAT OPENS. MOTOR MOUNTED ON A 356 X 356 X 19MM ALUMINUM HEATSINK.

ENCODER INFO:

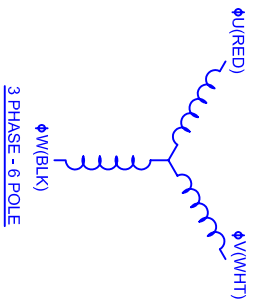
5V - 2048L COMMUTATING

BRAKE INFO:

INPUT VOLTAGE: 24 VDC
 HOLDING FORCE: 122 Nm [90 FT-LBS] MAX
 CURRENT DRAW: 2.51 AMPS
 RELEASING TIME: 100 ms
 INERTIA: .00150 IN-LBS-SEC²

CONNECTION CHART

PT02E-14-18P(027)				SG3102E-32-17P(027)			
ENCTHERM WIRE LEADS	WIRE FUNCTION	WIRE COLOR	WIRE FUNCTION	WIRE COLOR			
A	THRM	WHT	A	Φ U	RED		
B	CH A	BLU	B	Φ V	WHT		
C	CH A1	BLU/BLK	C	Φ W	BLK		
D	GND CABLE	SHLD	D	PE GND	GRN/YEL		
E	CH U	BRN					
F	CH V	GRY					
G	CH W	WHT					
H	CH W1	WHT/BLK					
J	+5VDC	RED					
K	THRM	WHT					
L	CH Z	YEL					
M	CH B	GRN					
N	CH BI	GRN/BLK					
P	CH UI	BRN/BLK					
R	CH VI	GRY/BLK					
S	GND	BLK					
T	CH Z1	YEL/BLK					
U							



CUSTOM MOTORS INC

190MM - 2 STK
 460V/KE=162MET/2048/CONN/BRK

TOLERANCES UNLESS SPECIFIED	
BORING	= H7
BORE	= H12
DECIMAL .xxx	±.12 (.005)
DECIMAL .xx	±.25 (.010)
DECIMAL .x	±.51 (.020)
DECIMAL	±.40 (.016)
ANGLE	±.030
REMOVE ALL BURRS/BREAK SHARP EDGES, ZAMER (0.10°)	
FINISH:	
WATERLAL:	
SCALE	1/2:1
DATE	9/7/04
DRAWING NO.	CM1902R162MK2048CSB
CUSTOMER:	
DRAWN:	DFLA
SHEET:	1 OF 1
REV.	1