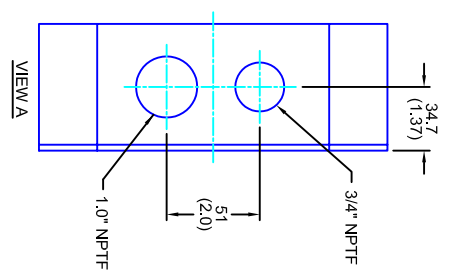
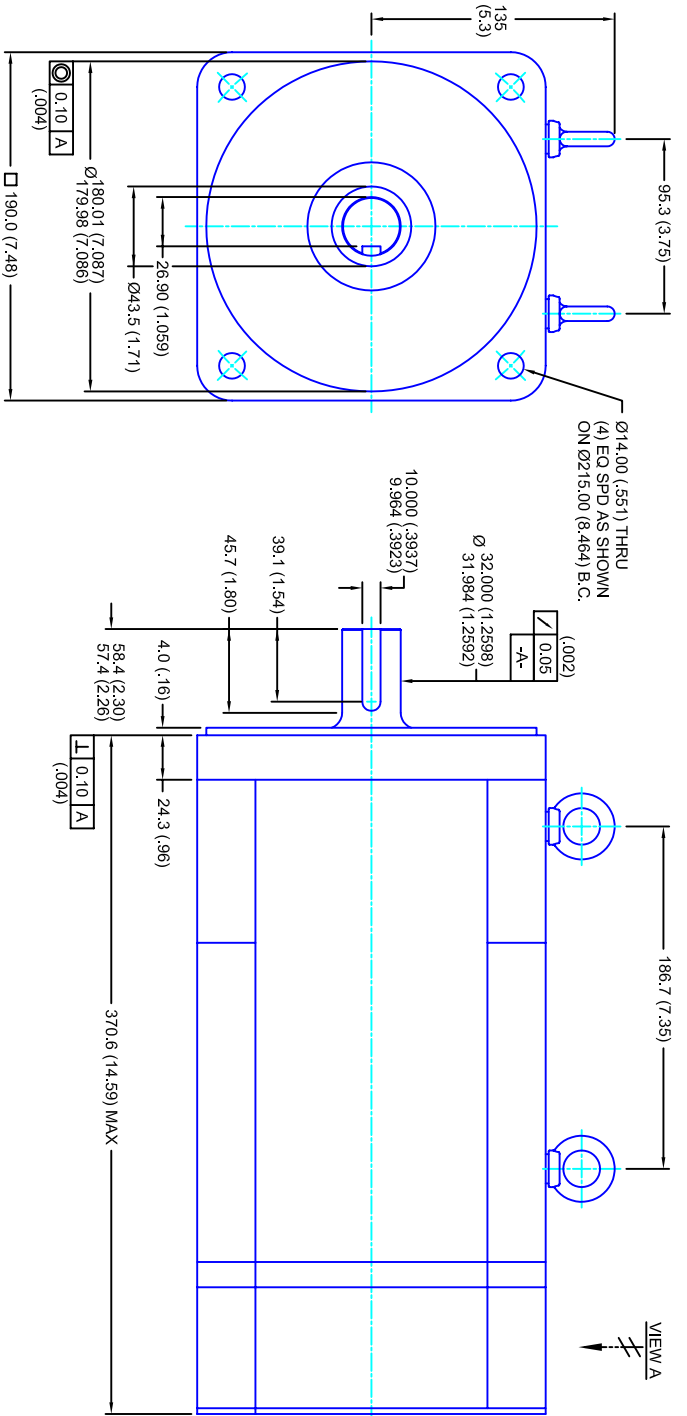


REVISIONS			
REV	DESCRIPTION	DATE	APPD
1	RELEASE DRAWING	11/3/05	



- NOTES:**
1. MILLIMETERS (INCHES)
  2. AXIAL LOAD: 45 KG [100 LBS ] MAX
  3. RADIAL LOAD: 113 KG [250 LBS ] MAX @ 25.4MM [1.00] FROM FACE
  4. MOTOR SEALED TO IP65
  5. MOTOR SHAFT: G&P STEEL, GRADE 1144
  6. MOTOR FINISH: BLACK MATT FINISH
  7. MOTOR WEIGHT: 44 KG [98 LBS ]

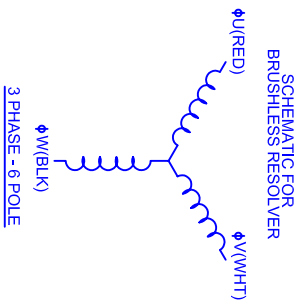
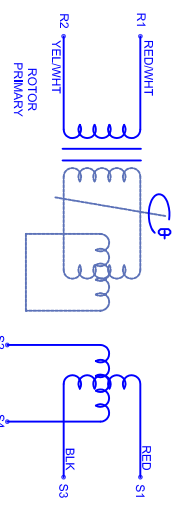
**ELECTRICAL DATA**

MOTOR PARAMETERS	UNITS/MEASURE	VALUES
VOLTAGE	VOLTS-AC	230
AMP TYPE	SINE	230
HORSEPOWER	HP	20.9
KILOWATTS	KW	15.6
MAX OPERATING SPEED	RPM	2850
SPEED @ RATED TORQUE	RPM	2400
*CONTINUOUS RATED TORQUE @ 2400 RPM	IN-LBS(IN)M	550(2.1)
*CONTINUOUS STALL TORQUE	IN-LBS(IN)M	640(2.3)
*CONTINUOUS LINE CURRENT	AMP(S/RMS/Φ)	24.9
PEAK TORQUE	IN-LBS(IN)M	1920(216.9)
PEAK CURRENT	AMP(S/RMS/Φ)	74.7
MAX THEORETICAL ACCEL.	RAD/SEC <sup>2</sup>	25,600
TORQUE SENSITIVITY	KI [N-BS/AMP/RMS/Φ]/(NIN/AMP/RMS/Φ)	25.7(2.91)
BACK EMF (LINE TO LINE)	Vrms/Krpm	162
D.C. RESISTANCE (P-P)	OHMS	.36
INDUCTANCE (P-P)	MILLIHENRIES	4.0
ROTOR INERTIA	Jm	.0750(.00847)
STATIC FRICTION	TT	9.8(1.1)

**CONNECTION CHART**

RES/THERM WIRE LEADS	WIRE FUNCTION	WIRE COLOR	TERMINAL FUNCTION	WIRE COLOR
R1	SHLD	WHT/BLK	1	Φ U
R2	THERM	WHT	2	Φ V
R3	THERM	WHT	3	Φ W
R4	SIN GND	YEL	-	PE GND
R5	COS GND	BLK		
R6	COS	RED		
R7	SIN	BLU		
R8	REF	RED/WHT		
R9	REF GND	YEL/WHT		
R10				
R11				

MOTOR WIRE LEADS	WIRE FUNCTION	WIRE COLOR
1	Φ U	RED
2	Φ V	WHT
3	Φ W	BLK
-	PE GND	GRN/YEL



**CUSTOM MOTORS INC**

190MM - 2 STK

460V/KE=162METRES/NPT

TOLERANCES UNLESS SPECIFIED	
BORER:	= H2
DECIMAL .xxx	±.12 (.005)
DECIMAL .xx	±.25 (.010)
DECIMAL .x	±.51 (.020)
ANGLE	±.40 (.016)
ANGLE	±.90
REMOVE ALL BURRS, BREAK SHARP EDGES, ZAP/FLK (.010)	
FINISH:	STAINLESS STEEL
WATERAL:	
SCALE	1/2:1
DATE	6/26/04
DRAWING NO.	CM1902R162MKRNPT
CUSTOMER:	
DRAWN:	DJLA
SHEET:	1 OF 1
REV.	1