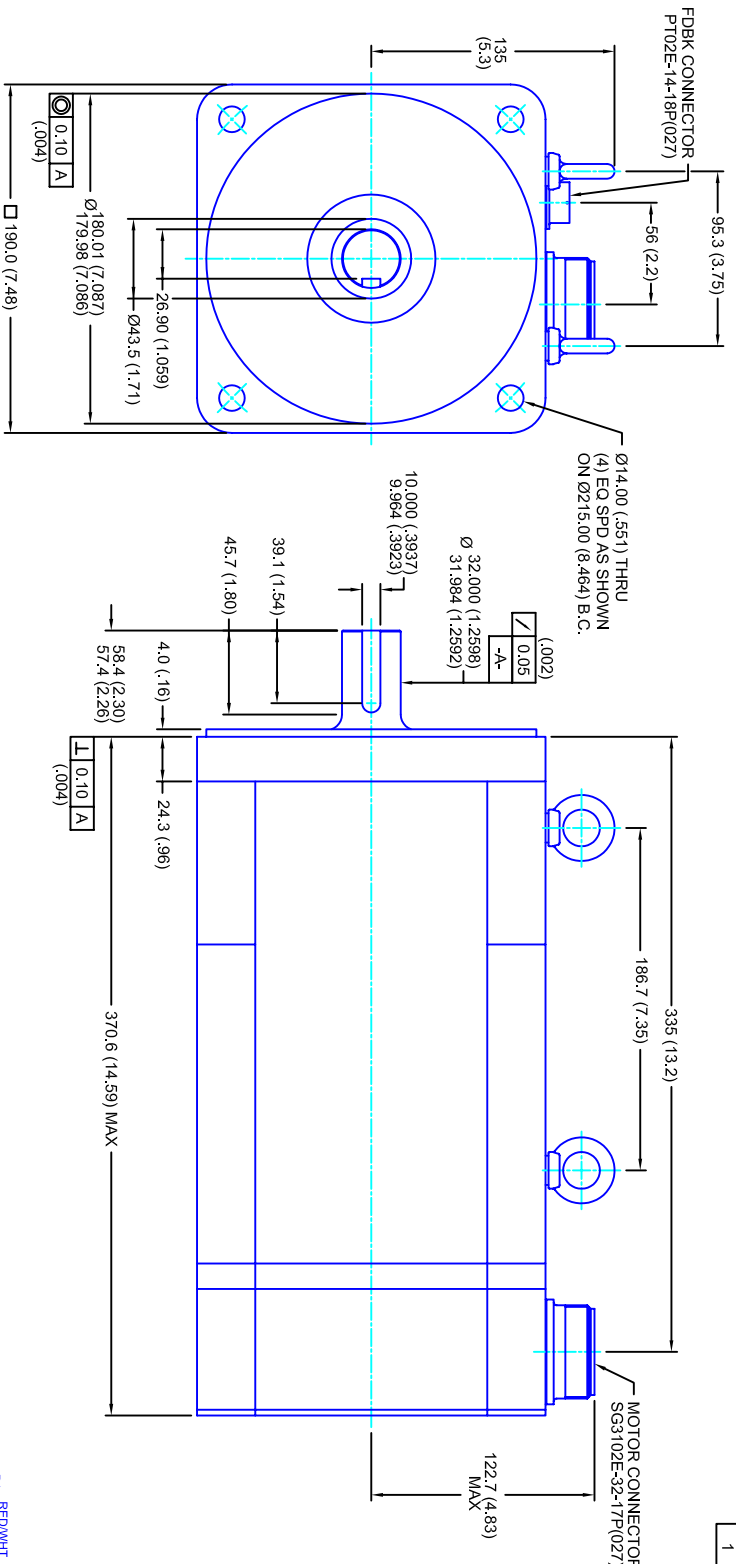


REVISIONS			
REV	DESCRIPTION	DATE	APPD
1	RELEASE DRAWING	12/1/04	



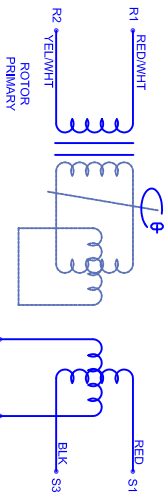
- NOTES:**
1. MILLIMETERS (INCHES)
 2. AXIAL LOAD: 45 KG [100 LBS] MAX
 3. RADIAL LOAD: 113 KG [250 LBS] MAX @ 25.4MM [1.00] FROM FACE
 4. MOTOR SEALED TO IP65
 5. MOTOR SHAFT: G&P STEEL, GRADE 1144
 6. MOTOR FINISH: BLACK MATT FINISH
 7. MOTOR WEIGHT: 44 KG [98 LBS]

ELECTRICAL DATA

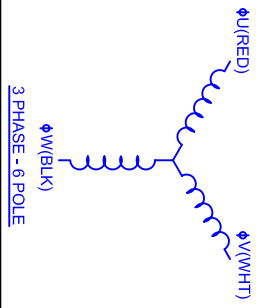
MOTOR PARAMETERS	UNITS/MEASURE	VALUES
VOLTAGE	VOLTS-AC	460
AMP TYPE	-	SINE
HORSEPOWER	HP	-
KILOWATTS	KW	-
MAX OPERATING SPEED	RPM	-
SPEED @ RATED TORQUE	RPM	-
*CONTINUOUS RATED TORQUE @ -	RPM	-
*CONTINUOUS STALL TORQUE	IN-LBS[INm]	-
*CONTINUOUS LINE CURRENT	AMPS/(RMS/Φ)	-
PEAK TORQUE	IN-LBS[INm]	-
PEAK CURRENT	AMPS/(RMS/Φ)	-
MAX THEORETICAL ACCEL.	RAD/SEC ²	-
TORQUE SENSITIVITY	KI [N-BS/AMP/(RMS/Φ)]/IN[MM/AMP/(RMS/Φ)]	12.7[1.44]
BACK EMF (LINE TO LINE)	Vrms/Krpm	80
D.C. RESISTANCE (P-P)	OHMS	.09
INDUCTANCE (P-P)	MILLIHENRIES	1.0
ROTOR INERTIA	IN-LBS-SEC ² [KG-M ²]	.0750[.00847]
STATIC FRICTION	TT	9.81[.1]

CONNECTION CHART

PT02E-14-18P(027)				SG3102E-32-17P(027)			
REST/TERM	WIRE FUNCTION	WIRE COLOR	WIRE LEADS	MOTOR WIRE FUNCTION	WIRE COLOR	WIRE LEADS	
A	-	-	-	A	Φ U	RED	
B	-	-	-	B	Φ V	WHT	
C	-	-	-	C	Φ W	BLK	
D	RES SHLD	WHT/BLK	-	D	PE GND	GRN/YEL	
E	REF	RED/WHT	-				
F	SIN GND	YEL	-				
G	COS GND	BLK	-				
H	SIN	BLU	-				
J	-	-	-				
K	-	-	-				
L	-	-	-				
M	-	-	-				
N	TERM	WHT	-				
P	-	-	-				
R	REF GND	YEL/WHT	-				
S	COS	RED	-				
T	-	-	-				
U	TERM	WHT	-				



SCHEMATIC FOR BRUSHLESS RESOLVER



3 PHASE - 6 POLE

TOLERANCES UNLESS SPECIFIED

BORE: = H12 ✓
 SURFACE FINISH: = 63 Ra ✓
 DECIMAL .xxx ±.12 (.005)
 DECIMAL .xx ±.25 (.010)
 DECIMAL .x ±.51 (.020)
 ANGLE (MM/INCHES) ±.40 (.016)
 ANGLE (IN/INCHES) ±.030

REMOVE ALL BURRS/BREAK SHARP EDGES AS SHOWN (0.10°)

PROPRIETARY RIGHTS OF CUSTOM MOTORS ARE INCLUDED IN THE INFORMATION DISCLOSED HEREIN. THIS INFORMATION IS NOT TO BE REPRODUCED OR TRANSMITTED IN ANY FORM OR BY ANY MEANS, ELECTRONIC OR MECHANICAL, INCLUDING PHOTOCOPYING, RECORDING, OR BY ANY INFORMATION STORAGE AND RETRIEVAL SYSTEM.

CUSTOM MOTORS INC

190MM - 2 STK

460V/KE=80/MET/RES/CONN

CUSTOMER: DRAWN: DFLA SHEET: 1 OF 1

SCALE: 1/2:1 DATE: 5/2/04 DRAWING NO: CM1902R80MKRCS

FINISH: MATERIAL: REV: 1