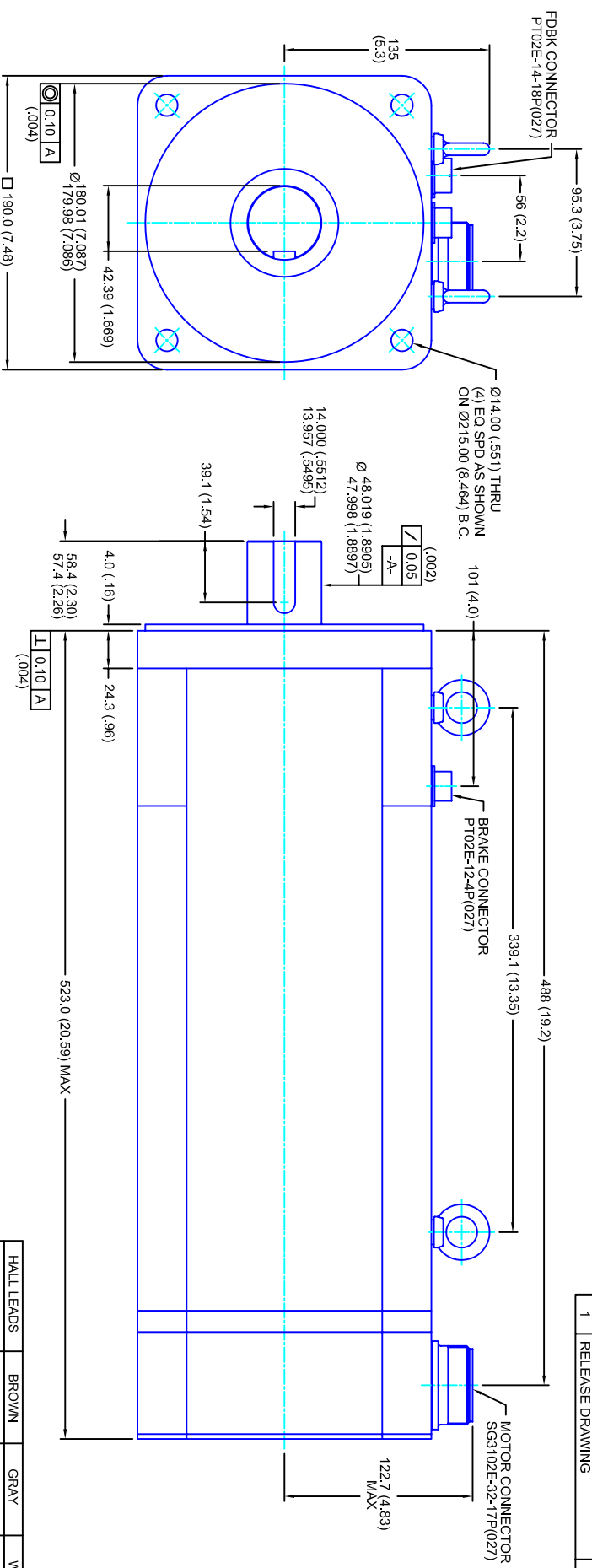


REVISIONS			
REV	DESCRIPTION	DATE	APPD
1	RELEASE DRAWING	11/3/05	



- NOTES:**
1. MILLIMETERS (INCHES)
  2. AXIAL LOAD: 45 KG (100 LBS.) MAX
  3. RADIAL LOAD: 113 KG (250 LBS.) MAX @ 25.4MM (1.00) FROM FACE
  4. MOTOR SEALED TO IP65
  5. MOTOR SHAFT: G&P STEEL, GRADE 1144
  6. MOTOR FINISH: BLACK MATT FINISH
  7. MOTOR WEIGHT: 69 KG (153 LBS.)

**ELECTRICAL DATA**

MOTOR PARAMETERS	UNITS/MEASURE	VALUES
VOLTAGE	VOLTS-AC	230
AMP TYPE	-	SINE
HORSEPOWER	HP	14.4
KILOWATTS	KW	10.7
MAX OPERATING SPEED	RPM	1400
SPEED @ RATED TORQUE	RPM	1200
*CONTINUOUS RATED TORQUE @ 1200 RPM	IN-LBS(INM)	75/765.51
*CONTINUOUS STALL TORQUE	IN-LBS(INM)	880/99.41
*CONTINUOUS LINE CURRENT	AMPS(RMS/Φ)	2640/298.31
PEAK TORQUE	IN-LBS(INM)	2640/298.31
PEAK CURRENT	AMPS(RMS/Φ)	102.7
MAX THEORETICAL ACCEL.	RAD/SEC <sup>2</sup>	24,066
TORQUE SENSITIVITY	KI [N-LS/AMP/RMS/Φ] [IN-AMP/RMS/Φ]	25.7/2.911
BACK EMF (LINE TO LINE)	±10% OHMS	162
D.C. RESISTANCE (P-P)	±10% OHMS	.19
INDUCTANCE (P-P)	±10% MILLIHENRIES	2.6
ROTOR INERTIA	IN-LBS-SEC <sup>2</sup> [KG-M <sup>2</sup> ]	.1097(.01240) w/ Bk
STATIC FRICTION	TT	11.41(.31)

**CONNECTION CHART**

PT02E-14-18P(027)				SG3102E-32-17P(027)			
ENCTHERM WIRE LEADS	WIRE FUNCTION	WIRE COLOR	PIN	MOTOR WIRE LEADS	WIRE FUNCTION	WIRE COLOR	PIN
A	THERM	WHT	A	A	Φ V	RED	A
B	CH A	BLU	B	B	Φ W	WHT	B
C	CH A	BLU/BLK	C	C	Φ W	BLK	C
D	GND CABLE	SHLD	D	D	PE GND	GRN/YEL	D
E	CH U	BRN					
F	CH V	GRY					
G	CH W	WHT					
H	CH W	WHT/BLK					
J	-	-					
K	+5VDC	RED					
L	THERM	WHT					
M	CH Z	YEL					
N	CH B	GRN					
P	CH B	GRN/BLK					
R	CH U	BRN/BLK					
S	CH V	GRY/BLK					
T	GND	BLK					
U	CH Z	YEL/BLK					

**ENCODER INFO:**

**BRAKE INFO:**

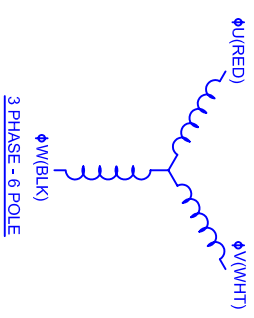
5V - 2048L COMMUTATING

INPUT VOLTAGE: 24 VDC  
 HOLDING FORCE: 122 Nm [ 90 FT-LBS ] MAX  
 CURRENT DRAW: 2.51 AMPS  
 RELEASING TIME: 100 ms  
 INERTIA: .00150 IN-LBS-SEC<sup>2</sup>

HALL LEADS	BROWN	GRAY	WHITE
MOTOR LEADS	WHT-RED	RED-BLK	BLK-WHT

VIEW ON THE OSCILLOSCOPE

MOTOR ROTATION IS COUNTER CLOCKWISE (CCW)  
 LOOKING AT MOUNTING FACE END



**190MM - 3 STK**

**CUSTOM MOTORS INC**

230V/KE=162/MET/2048/CONN/BRK

PROPRIETARY RIGHTS OF CUSTOM MOTORS ARE INCLUDED IN THE INFORMATION PROVIDED HEREIN. THIS INFORMATION IS NOT TO BE REPRODUCED OR TRANSMITTED IN ANY FORM OR BY ANY MEANS, ELECTRONIC OR MECHANICAL, INCLUDING PHOTOCOPYING, RECORDING, OR BY ANY INFORMATION STORAGE AND RETRIEVAL SYSTEM.

FINISH: STAINLESS STEEL

SCALE: 1/2:1 DATE: 3/8/05 DRAWING NO: CM1903Q162MK2048CSB REV: 1