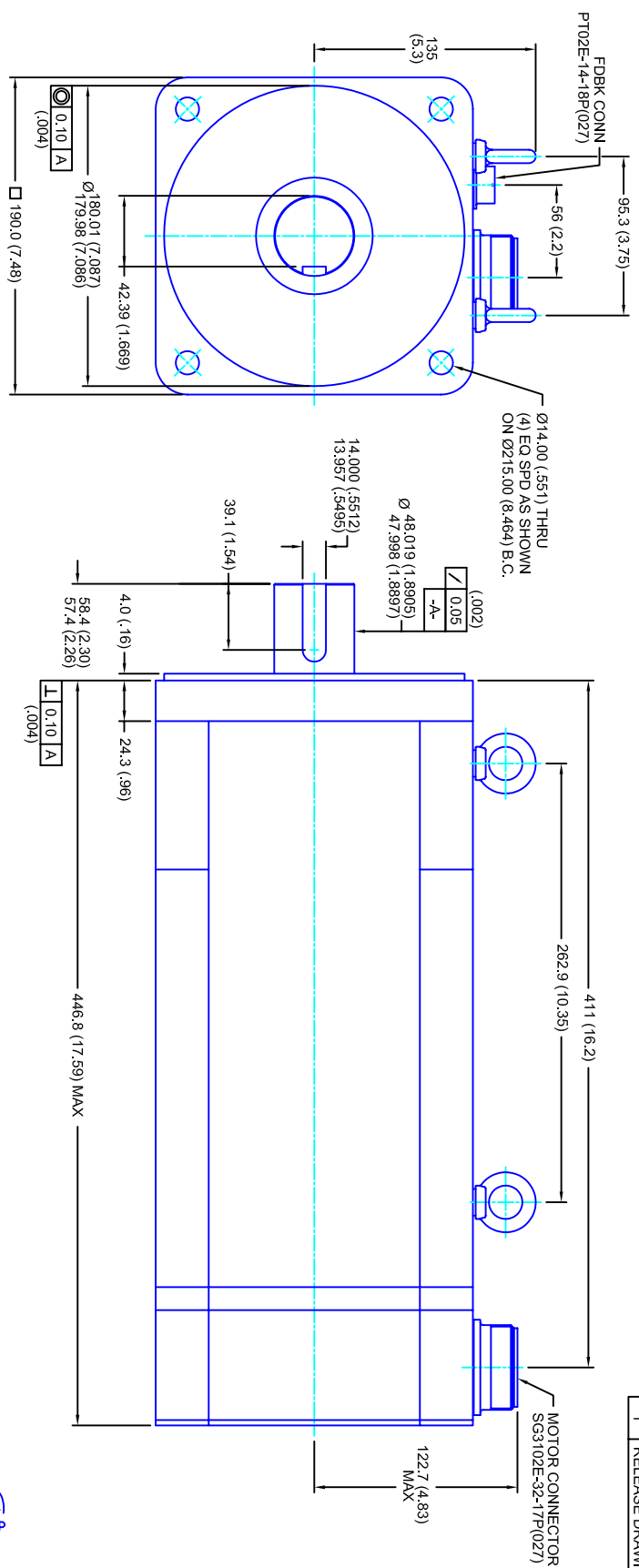


REVISIONS			
REV	DESCRIPTION	DATE	APPD
1	RELEASE DRAWING	11/3/05	



- NOTES:**
1. MILLIMETERS (INCHES)
  2. AXIAL LOAD: 45 KG [100 LBS] MAX
  3. RADIAL LOAD: 113 KG [250 LBS] MAX @ 25.4MM [1.00] FROM FACE
  4. MOTOR SEALED TO IP65
  5. MOTOR SHAFT: G&P STEEL, GRADE 1144
  6. MOTOR FINISH: BLACK MATT FINISH
  7. MOTOR WEIGHT: 59 KG [130 LBS]

**ELECTRICAL DATA**

MOTOR PARAMETERS	UNITS/MEASURE	VALUES
VOLTAGE	VOLTS-AC	230
AMP TYPE	-	SINE
HORSEPOWER	HP	14.4
KILOWATTS	KW	10.7
MAX OPERATING SPEED	RPM	1400
SPEED @ RATED TORQUE	RPM	1200
*CONTINUOUS RATED TORQUE @ 1200 RPM	IN-LBS(INM)	757/55.51
*CONTINUOUS STALL TORQUE	IN-LBS(INM)	880/99.41
*CONTINUOUS LINE CURRENT	AMPS(RMS/Φ)	34.2
PEAK TORQUE	IN-LBS(INM)	2640/298.31
PEAK CURRENT	AMPS(RMS/Φ)	102.7
MAX THEORETICAL ACCEL.	RAD/SEC <sup>2</sup>	24,399
TORQUE SENSITIVITY	KI [N-BS/AMP/RMS/Φ]/(NIN/AMP/RMS/Φ)	25.7/2.911
BACK EMF (LINE TO LINE)	Vrms/Krpm	162
D.C. RESISTANCE (P-P)	OHMS	.19
INDUCTANCE (P-P)	MILLIHENRIES	2.6
ROTOR INERTIA	IN-LBS-SEC <sup>2</sup> [KG-M <sup>2</sup> ]	.1082(0.1222)
STATIC FRICTION	TT	11.41(1.3)

**CONNECTION CHART**

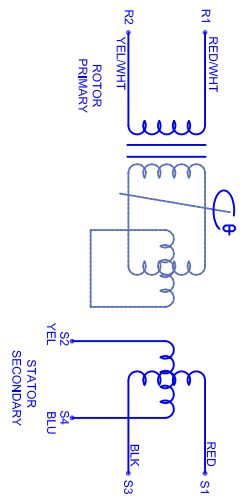
PT02E-14-18P(027)

REST/HERM WIRE LEADS	WIRE FUNCTION	WIRE COLOR
PIN A	-	-
PIN B	-	-
PIN C	-	-
PIN D	RES SHLD	WHT/BLK
PIN E	REF	RED/WHT
PIN F	SIN GND	YEL
PIN G	COS GND	BLK
PIN H	SIN	BLU
PIN J	-	-
PIN K	-	-
PIN L	-	-
PIN M	-	-
PIN N	THERM	WHT
PIN P	-	-
PIN R	REF GND	YEL/WHT
PIN S	COS	RED
PIN T	-	-
PIN U	THERM	WHT

SG3102E-32-17P(027)

MOTOR WIRE LEADS	WIRE FUNCTION	WIRE COLOR
PIN A	ΦU	RED
PIN B	ΦV	WHT
PIN C	ΦW	BLK
PIN D	PE GND	GRN/YEL

**SCHEMATIC FOR BRUSHLESS RESOLVER**



3 PHASE - 6 POLE



190MM - 3 STK  
230V/KE=162MET/RES/CONN

TOLERANCES UNLESS SPECIFIED	
BORER:	= H2
BORE:	= H12
DECIMAL .XXX	±.12 (.005)
DECIMAL .XX	±.25 (.020)
DECIMAL .X	±.51 (.020)
DECIMAL .	±.40 (.016)
ANGLE	±.09
REMOVE ALL BURRS/BREAK SHARP EDGES AS SHOWN (0.10°)	
FINISH:	
WATERLAL:	
SCALE	1/2:1
DATE	3/8/05
DRAWING NO.	CM1903Q162MKRCS
CUSTOMER:	
DRAWN:	DFLA
SHEET:	1 OF 1
REV.	1