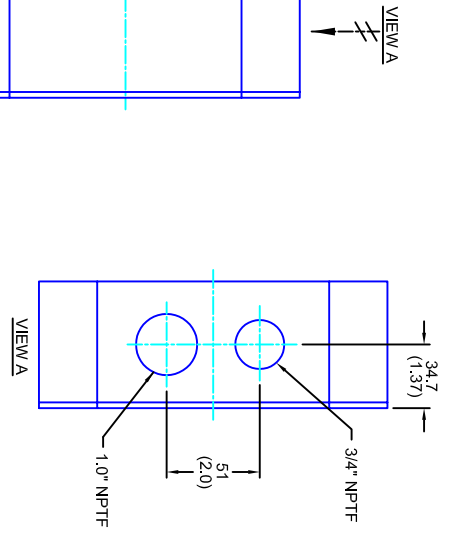
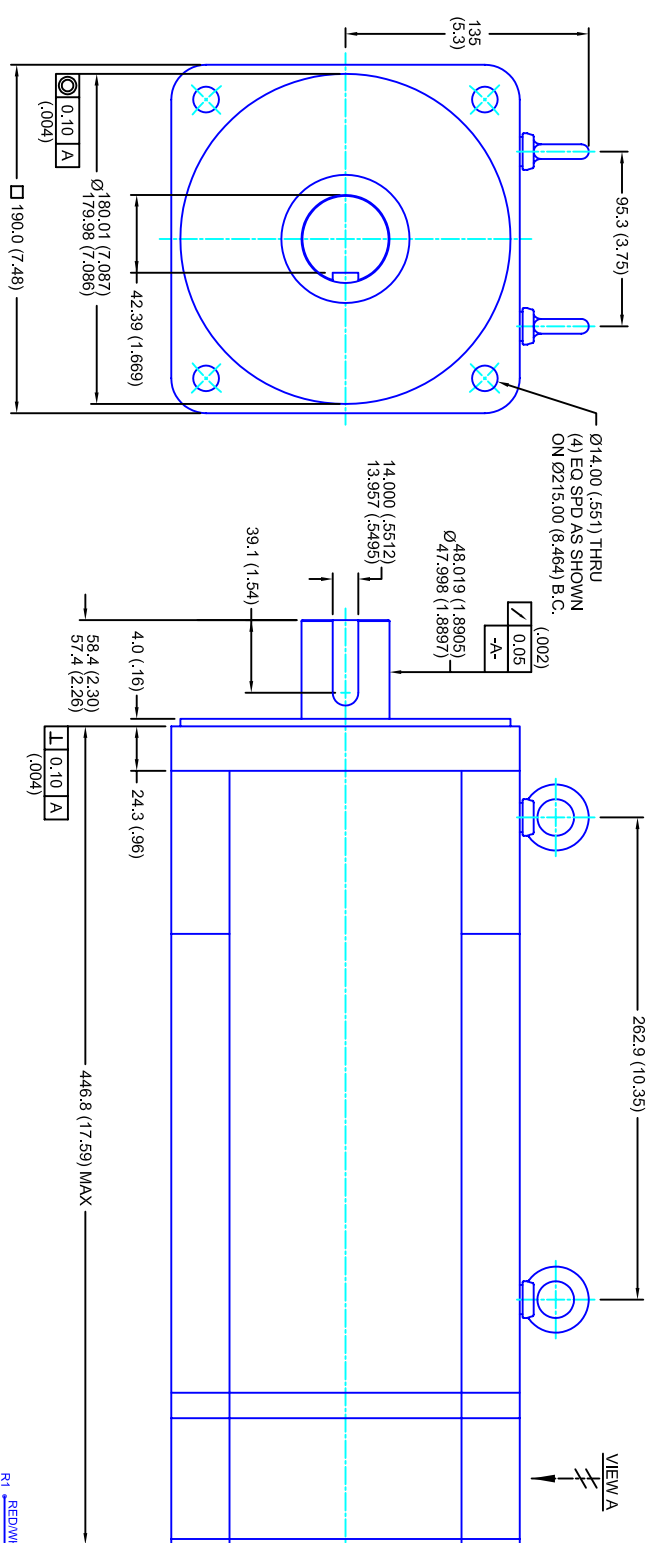


REVISIONS			
REV	DESCRIPTION	DATE	APPD
1	RELEASE DRAWING	7/22/04	



- NOTES:**
1. MILLIMETERS (INCHES)
 2. AXIAL LOAD: 45 KG [100 LBS] MAX
 3. RADIAL LOAD: 113 KG [250 LBS] MAX @ 25.4MM [1.00] FROM FACE
 4. MOTOR SEALED TO IP65
 5. MOTOR SHAFT: G&P STEEL, GRADE 1144
 6. MOTOR FINISH: BLACK MATT FINISH
 7. MOTOR WEIGHT: 59 KG [130 LBS]

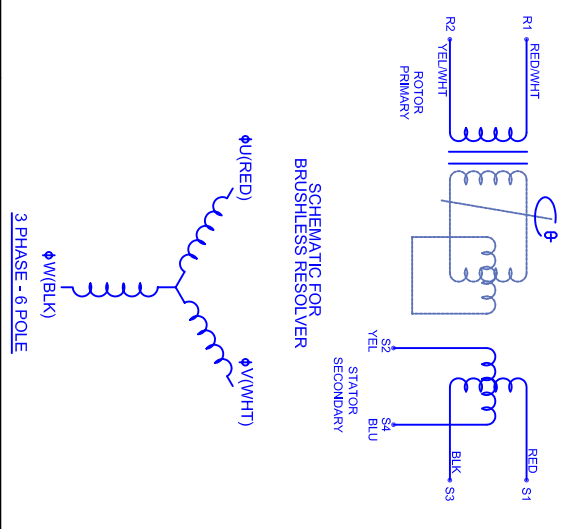
ELECTRICAL DATA

MOTOR PARAMETERS	UNITS/MEASURE	VALUES
VOLTAGE	VOLTS-AC	230
AMP TYPE	-	SINE
HORSEPOWER	HP	28.8
KILOWATTS	KW	21.5
MAX OPERATING SPEED	RPM	3000
SPEED @ RATED TORQUE	RPM	2400
*CONTINUOUS RATED TORQUE @ 2400 RPM	IN-LBS(INM)	75/765.51
*CONTINUOUS STALL TORQUE	IN-LBS(INM)	880/99.41
*CONTINUOUS LINE CURRENT	AMP(S/RMS/Φ)	1780/201.11
PEAK TORQUE	IN-LBS(INM)	140.2
PEAK CURRENT	AMP(S/RMS/Φ)	16.451
MAX THEORETICAL ACCEL.	RAD/SEC ²	12.7/1.44
TORQUE SENSITIVITY	KI [N-LBS/AMP(RMS)/MIN/AMP(RMS/Φ)]	80
BACK EMF (LINE TO LINE)	Vrms/Krpm	.05
D.C. RESISTANCE (P-P)	OHMS	.65
INDUCTANCE (P-P)	MILLIHENRIES	.1082/0.1222
ROTOR INERTIA	Jm	11.4/1.31
STATIC FRICTION	TT	-

CONNECTION CHART

RES/THERM WIRE LEADS	WIRE FUNCTION	WIRE COLOR	TERMINAL FUNCTION	WIRE COLOR
R1	SHLD	WHT/BLK	1	RED
R2	THERM	WHT	2	WHT
R3	THERM	WHT	3	BLK
R4	SIN GND	YEL	-	GRN/YEL
R5	COS GND	BLK	-	-
R6	COS	RED	-	-
R7	SIN	BLU	-	-
R8	REF	RED/WHT	-	-
R9	REF GND	YEL/WHT	-	-
R10	-	-	-	-
R11	-	-	-	-

SCHEMATIC FOR BRUSHLESS RESOLVER



190MM - 3 STK
230V/KE-80/MET/RES/NPT

*25°C AMBIENT WITH A MAXIMUM CASE TEMPERATURE OF 100°C ON THE MOTOR. THERMOSTAT IN STATOR WILL OPEN IF STATOR TEMPERATURE EXCEEDS 155°C. THIS WILL GIVE YOU ~10% HEADROOM IN THE CONTINUOUS TORQUE RATING BEFORE THERMOSTAT OPENS. MOTOR MOUNTED ON A 356 X 356 X 19MM ALUMINUM HEATSINK.

REVISIONS	DATE	APPD
1	7/22/04	

TOLERANCES UNLESS SPECIFIED

BORER: = H2 ✓
 SURFACE FINISH: = H12 ✓
 DECIMAL .xxx ±.12 (0.05)
 DECIMAL .xx ±.25 (0.10)
 DECIMAL .x ±.51 (0.20)
 ANGLE ° ±.01 (0.06)
 ANGLE °/30 ±.030

REMOVE ALL BURRS/BREAK SHARP EDGES, ZAMPERK (0.10°)

PROPRIETARY RIGHTS OF CUSTOM MOTORS ARE INCLUDED IN THE INFORMATION PROVIDED HEREIN. THIS INFORMATION IS NOT TO BE REPRODUCED OR TRANSMITTED IN ANY FORM OR BY ANY MEANS, ELECTRONIC OR MECHANICAL, INCLUDING PHOTOCOPYING, RECORDING, OR BY ANY INFORMATION STORAGE AND RETRIEVAL SYSTEM.

CUSTOMER: - DRAWING NO. **CM1903Q80MKRNP** DRAWN: DFLA SHEET: 1 OF 1

SCALE: 1/2:1 DATE: 3/22/04

FINISH: MATERIAL: WATERL: