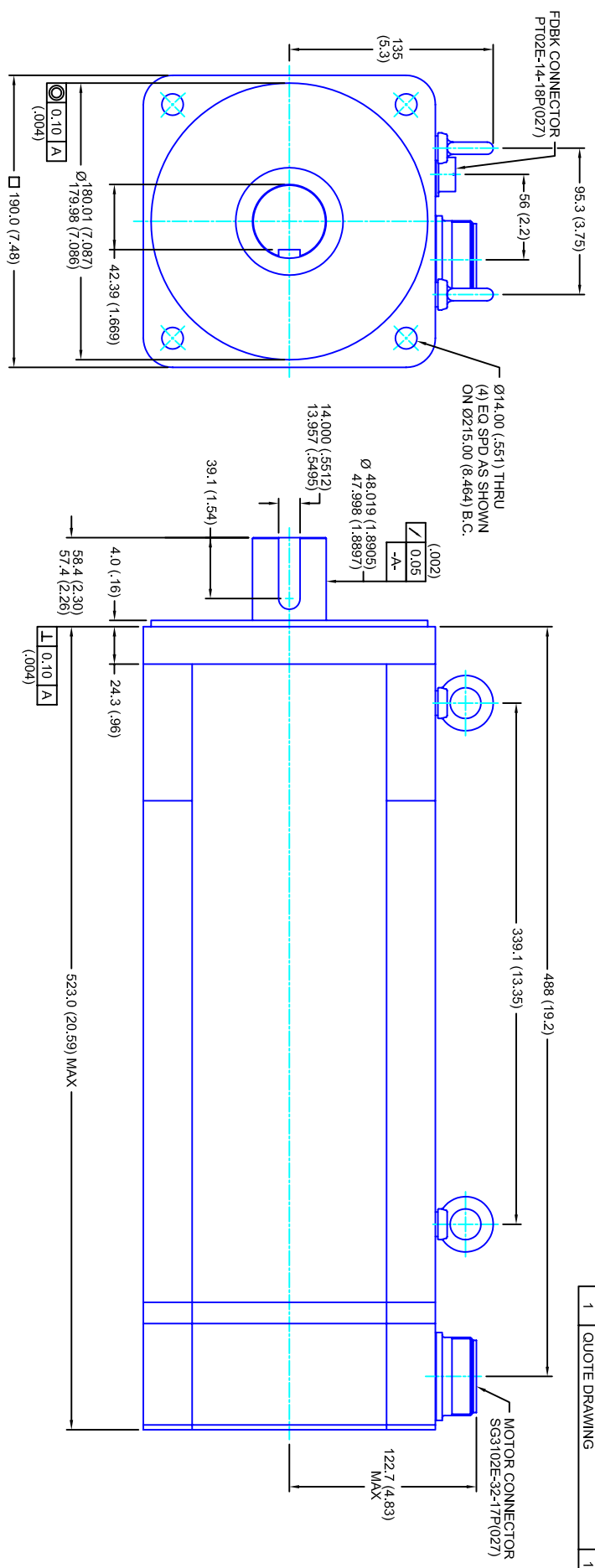


REVISIONS			
REV	DESCRIPTION	DATE	APP'D
1	QUOTE DRAWING	12/4/04	



- NOTES:**
1. MILLIMETERS (INCHES)
 2. AXIAL LOAD: 45 KG [100 LBS] MAX
 3. RADIAL LOAD: 113 KG [250 LBS] MAX @ 25.4MM [1.00] FROM FACE
 4. MOTOR SEALED TO IP65
 5. MOTOR SHAFT: G&P STEEL, GRADE 1144
 6. MOTOR FINISH: BLACK MATT FINISH
 7. MOTOR WEIGHT 73 KG [162 LBS]

ELECTRICAL DATA

MOTOR PARAMETERS	UNITS/MEASURE	VALUES
VOLTAGE	VOLTS-AC	230
AMP TYPE	-	SINE
HORSEPOWER	HP	35.7
KILOWATTS	KW	26.7
MAX OPERATING SPEED	RPM	3000
SPEED @ RATED TORQUE	RPM	2400
*CONTINUOUS RATED TORQUE @ 2400 RPM	IN-LBS(IN)M	939[106.1]
*CONTINUOUS STALL TORQUE	IN-LBS(IN)M	1092[123.4]
*CONTINUOUS LINE CURRENT	AMPS(RMS/Φ)	63.5
PEAK TORQUE	IN-LBS(IN)M	1780[201.1]
PEAK CURRENT	AMPS(RMS/Φ)	103.5
MAX THEORETICAL ACCEL.	RAD/SEC ²	12,742
TORQUE SENSITIVITY	KI [N-BS/AMP/RMS/Φ][IN-AMP/RMS/Φ]	17.2[1.94]
BACK EMF (LINE TO LINE)	±10% Vrms/Krpm	108
D.C. RESISTANCE (P-P)	±10% OHMS	.06
INDUCTANCE (P-P)	±10% MILLIHENRIES	.84
ROTOR INERTIA	IN-LBS-SEC ² [KG-M ²]	.1397[.01579]
STATIC FRICTION	TT	13.0[1.5]

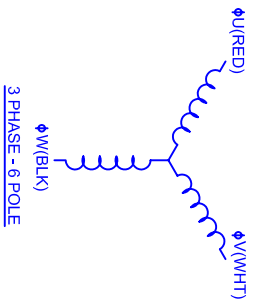
CONNECTION CHART

PT02E-14-18P(027)

ENCTHERM WIRE LEADS	WIRE FUNCTION	WIRE COLOR
A	THERM	WHT
B	CH A	BLU
C	CH A	BLU/BLK
D	GND CABLE	SHLD
E	CH U	BRN
F	CH V	GRY
G	CH W	WHT
H	CH W	WHT/BLK
J	-	-
K	+5VDC	RED
L	THERM	WHT
M	CH Z	YEL
N	CH B	GRN
P	CH BL	GRN/BLK
R	CH UL	BRN/BLK
S	CH VI	GRY/BLK
T	GND	BLK
U	CH Z1	YEL/BLK

SG3102E-32-17P(027)

MOTOR WIRE LEADS	WIRE FUNCTION	WIRE COLOR
A	Φ U	RED
B	Φ V	WHT
C	Φ W	BLK
D	PE GND	GRN/YEL



190MM - 4 STK
230V/KE=108/MET/2048/CONN

TOLERANCES UNLESS SPECIFIED	
BORER:	= H12 ✓
DECIMAL .xxx	±.12 (.005)
DECIMAL .xx	±.25 (.010)
DECIMAL .x	±.51 (.020)
ANGLE	±.030
REMOVE ALL BURRS/BREAK SHARP EDGES AS SHOWN	
FINISH:	AS SHOWN (0.10)
WATERLAL:	
SCALE	1/2:1
DATE	6/27/04
DRAWING NO.	CM1904Q108MK2048CS
CUSTOMER:	
DRAWN:	DFLA
SHEET:	1 OF 1
REV.	1