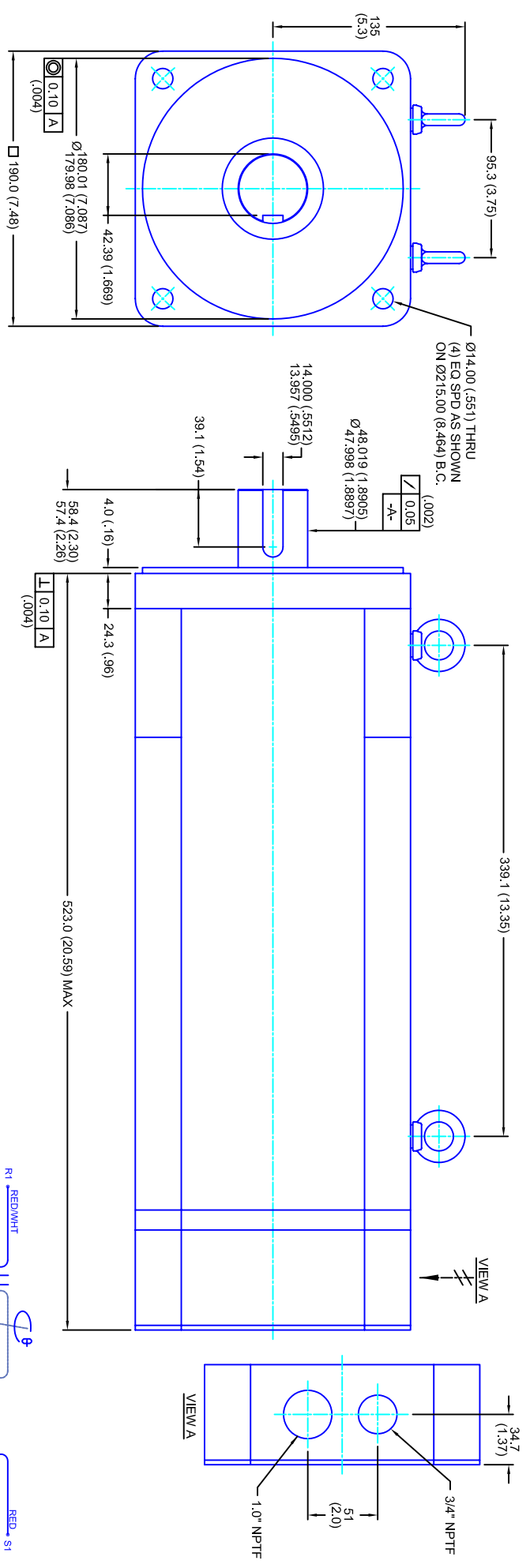


REVISIONS			
REV	DESCRIPTION	DATE	APPD
1	RELEASE DRAWING	12/4/04	



- NOTES:**
1. MILLIMETERS (INCHES)
 2. AXIAL LOAD: 45 KG [100 LBS] MAX
 3. RADIAL LOAD: 113 KG [250 LBS] MAX @ 25.4MM [1.00] FROM FACE
 4. MOTOR SEALED TO IP65
 5. MOTOR SHAFT: G&P STEEL, GRADE 1144
 6. MOTOR FINISH: BLACK MATT FINISH
 7. MOTOR WEIGHT 73 KG [162 LBS]

ELECTRICAL DATA

MOTOR PARAMETERS	UNITS/MEASURE	VALUES
VOLTAGE	VOLTS-AC	230
AMP TYPE	SINE	
HORSEPOWER	HP	35.7
KILOWATTS	KW	26.7
MAX OPERATING SPEED	RPM	3000
SPEED @ RATED TORQUE	RPM	2400
*CONTINUOUS RATED TORQUE @ 2400 RPM	IN-LBS(INM)	939[106.1]
*CONTINUOUS STALL TORQUE	IN-LBS(INM)	1092[123.4]
CONTINUOUS LINE CURRENT	AMP(S/RMS/Φ)	63.5
PEAK TORQUE	IN-LBS(INM)	1780[201.1]
PEAK CURRENT	AMP(S/RMS/Φ)	103.5
MAX THEORETICAL ACCEL.	RAD/SEC ²	12,742
TORQUE SENSITIVITY	KI [N-BS/AMP/RMS/Φ][IN-AMP/ENIS/Φ]	17.2[1.94]
BACK EMF (LINE TO LINE)	Vrms/Krpm	108
D.C. RESISTANCE (P-P)	OHMS	.06
INDUCTANCE (P-P)	MILLIHENRIES	.84
ROTOR INERTIA	IN-LBS-SEC ² [KG-M ²]	.1397[.01579]
STATIC FRICTION	TT	13.0[1.5]

CONNECTION CHART

RES/THERM WIRE LEADS	WIRE FUNCTION	WIRE COLOR	TERMINAL FUNCTION	WIRE COLOR
R1	SHLD	WHT/BLK	1	RED
R2	THERM	WHT	2	WHT
R3	THERM	WHT	3	BLK
R4	SIN GND	YEL		
R5	COS GND	BLK		
R6	COS	RED		
R7	SIN	BLU		
R8	REF	RED/WHT		
R9	REF GND	YEL/WHT		
R10				
R11				

MOTOR WIRE LEADS	WIRE FUNCTION	WIRE COLOR
1	Φ U	RED
2	Φ V	WHT
3	Φ W	BLK
	PE GND	GRN/VEL

*25°C AMBIENT WITH A MAXIMUM CASE TEMPERATURE OF 100°C ON THE MOTOR. THERMOSTAT IN STATOR WILL OPEN IF STATOR TEMPERATURE EXCEEDS 155°C. THIS WILL GIVE YOU ~10% HEADROOM IN THE CONTINUOUS TORQUE RATING BEFORE THERMOSTAT OPENS. MOTOR MOUNTED ON A 356 X 356 X 19MM ALUMINUM HEATSINK.

TOLERANCES UNLESS SPECIFIED

BORER: = H2 ✓
 HOLE: = H12 ✓
 DECIMAL .xxx ±.12 (.005)
 DECIMAL .xx ±.25 (.010)
 DECIMAL .x ±.51 (.020)
 FRACTION ±.01 (.016)
 ANGLE ±.09

REMOVE ALL BURRS/BREAK SHARP EDGES AS SHOWN (0.10°)

PROPRIETARY RIGHTS OF CUSTOM MOTORS ARE INCLUDED IN THE INFORMATION PROVIDED HEREIN. THIS INFORMATION DOES NOT CONSTITUTE AN OFFER OF ANY PRODUCT OR SERVICE. CUSTOMER'S SPECIFICATIONS ARE SUBJECT TO CHANGE WITHOUT NOTICE.

CUSTOMER: DRAWING NO. CUSTOMER: DRAWING NO. CUSTOMER: DRAWING NO.

SCALE: 1/2:1 DATE: 6/13/04 DRAWING NO.: CM1904Q.108MKRNP1 REV. 1

230V/KE=108/MET/RES/NPT

190MM - 4 STK

CUSTOM MOTORS INC

