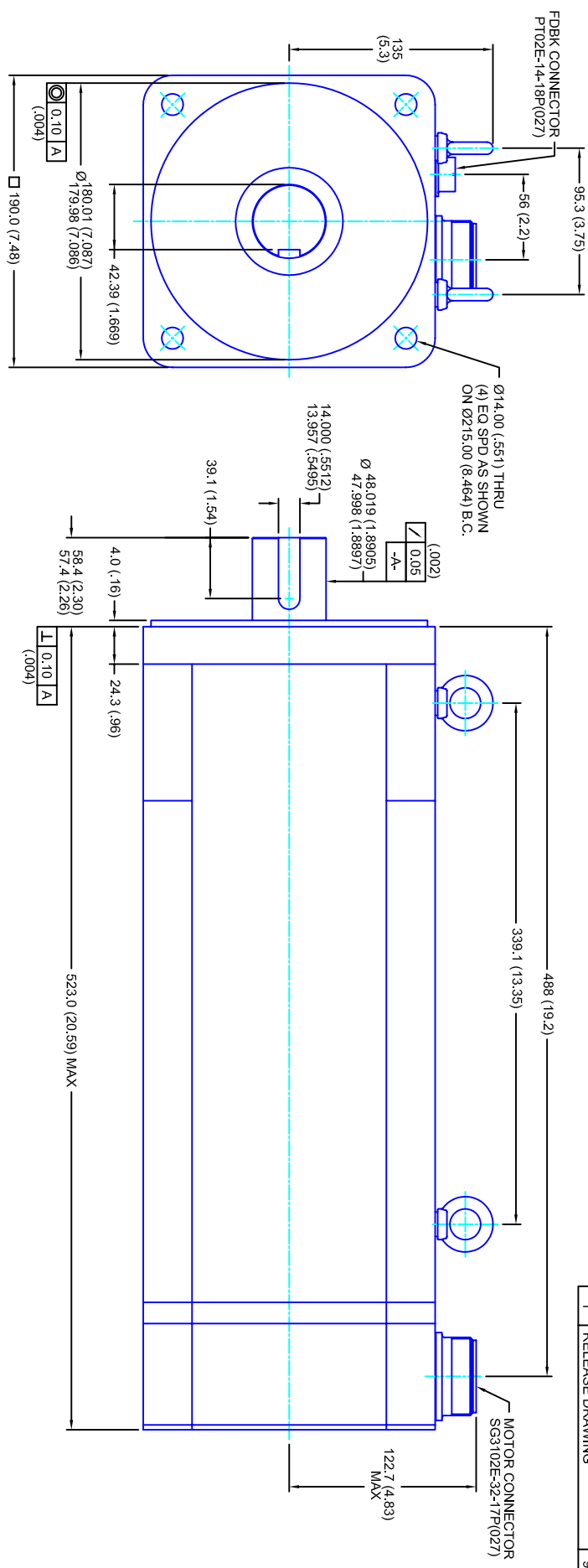


REVISIONS			
REV	DESCRIPTION	DATE	APP'D
1	RELEASE DRAWING	9/15/05	



- NOTES:**
1. MILLIMETERS (INCHES)
 2. AXIAL LOAD: 45 KG [100 LBS] MAX
 3. RADIAL LOAD: 113 KG [250 LBS] MAX @ 25.4MM [1.00] FROM FACE
 4. MOTOR SEALED TO IP65
 5. MOTOR SHAFT: G&P STEEL, GRADE 1144
 6. MOTOR FINISH: BLACK MATT FINISH
 7. MOTOR WEIGHT 73 KG [162 LBS]

ELECTRICAL DATA

MOTOR PARAMETERS	UNITS/MEASURE	VALUES
VOLTAGE	VOLTS-AC	480
AMP TYPE	-	SINE
HORSEPOWER	HP	35.7
KILOWATTS	KW	26.7
MAX OPERATING SPEED	RPM	2850
SPEED @ RATED TORQUE	RPM	2400
*CONTINUOUS RATED TORQUE @ 2400 RPM	IN-LBS(INM)	9391(106.1)
*CONTINUOUS STALL TORQUE	IN-LBS(INM)	10921(123.4)
*CONTINUOUS LINE CURRENT	AMPS(RMS/Φ)	43.0
PEAK TORQUE	IN-LBS(INM)	32763(70.2)
PEAK CURRENT	AMPS(RMS/Φ)	127.5
MAX THEORETICAL ACCEL.	RAD/SEC ²	23,450
TORQUE SENSITIVITY	KI [N-BS/AMP/RMS/Φ][IN-AMP/RMS/Φ]	25.7(2.91)
BACK EMF (LINE TO LINE)	±10% Vrms/Krpm	162
D.C. RESISTANCE (P-P)	±10% OHMS	.14
INDUCTANCE (P-P)	±10% MILLIHENRIES	1.9
ROTOR INERTIA	IN-LBS-SEC ² [KG-M ²]	.1397(.01579)
STATIC FRICTION	TT	13.0(1.5)

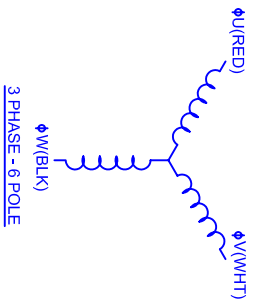
CONNECTION CHART

PT02E-14-18P(027)

ENCTHERM WIRE LEADS	WIRE FUNCTION	WIRE COLOR
A	THERM	WHT
B	CH A	BLU
C	CH A	BLU/BLK
D	GND CABLE	SHLD
E	CH U	BRN
F	CH V	GRY
G	CH W	WHT
H	CH W	WHT/BLK
J	-	-
K	+5VDC	RED
L	THERM	WHT
M	CH Z	YEL
N	CH B	GRN
P	CH B	GRN/BLK
R	CH U	BRN/BLK
S	CH V	GRY/BLK
T	GND	BLK
U	CH Z	YEL/BLK

SG3102E-32-17P(027)

MOTOR WIRE LEADS	WIRE FUNCTION	WIRE COLOR
A	Φ U	RED
B	Φ V	WHT
C	Φ W	BLK
D	PE GND	GRN/YEL



TOLERANCES UNLESS SPECIFIED

SURFACE FINISH: = 63 Ra ✓
 BORE: = H7 ✓
 DECIMAL .xxx = ±.012 (0.05)
 DECIMAL .xx = ±.025 (0.10)
 DECIMAL .x = ±.051 (0.20)
 FRACTION = ±.001 (0.05)
 ANGLE = 0.50

REMOVE ALL BURRS/BREAK SHARP EDGES, AS PER (0.10)

CUSTOM MOTORS INC

460V/KE=162MMET/2048/CONN

190MM - 4 STK

SCALE: 1/2:1 DATE: 6/27/04 DRAWING NO: CM1904R162MK2048CS REV: 1