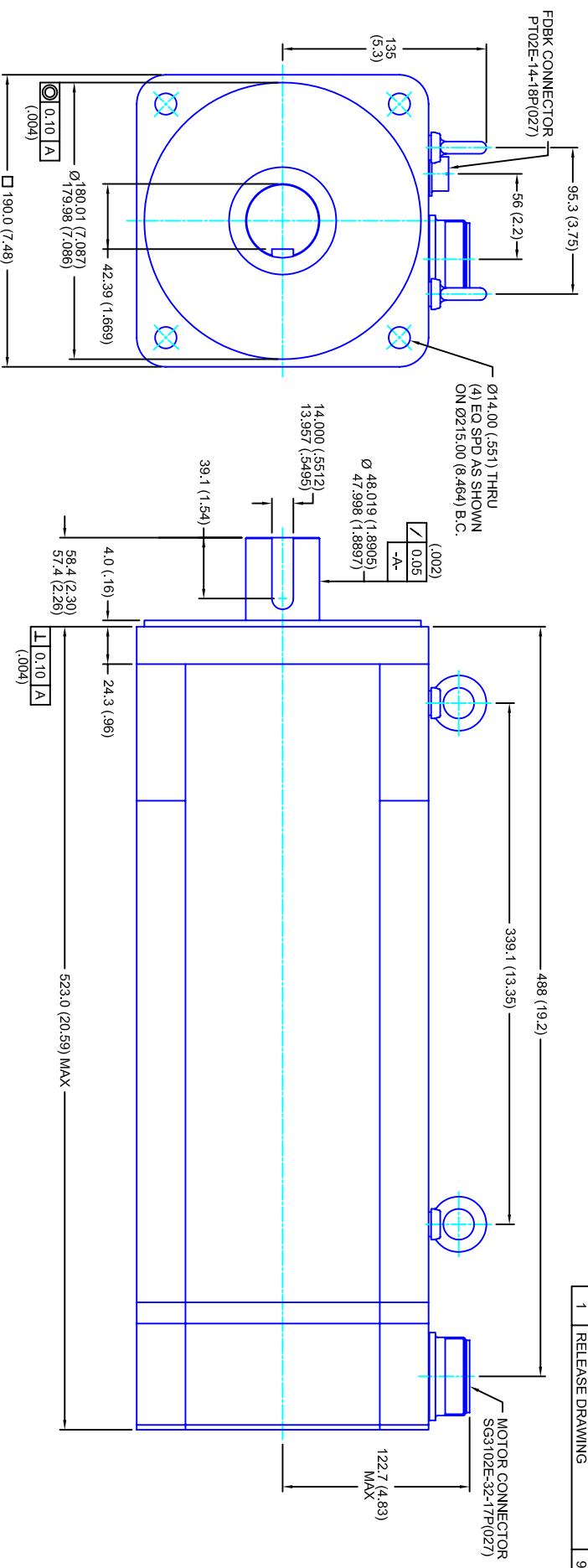


REVISIONS			
REV	DESCRIPTION	DATE	APPD
1	RELEASE DRAWING	9/15/05	



- NOTES:**
1. MILLIMETERS (INCHES)
 2. AXIAL LOAD: 45 KG [100 LBS] MAX
 3. RADIAL LOAD: 113 KG [250 LBS] MAX @ 25.4MM [1.00] FROM FACE
 4. MOTOR SEALED TO IP65
 5. MOTOR SHAFT: G&P STEEL, GRADE 1144
 6. MOTOR FINISH: BLACK MATT FINISH
 7. MOTOR WEIGHT 73 KG [162 LBS]

ELECTRICAL DATA

MOTOR PARAMETERS	UNITS/MEASURE	VALUES
VOLTAGE	VOLTS-AC	460
AMP TYPE	-	SINE
HORSEPOWER	HP	35.7
KILOWATTS	KW	26.7
MAX OPERATING SPEED	RPM	2850
SPEED @ RATED TORQUE	RPM	2400
*CONTINUOUS RATED TORQUE @ 2400 RPM	IN-LBS(INM)	9391(06.1)
*CONTINUOUS STALL TORQUE	IN-LBS(INM)	10921(23.4)
*CONTINUOUS LINE CURRENT	AMPS(RMS/Φ)	43.0
PEAK TORQUE	IN-LBS(INM)	32763(70.2)
PEAK CURRENT	AMPS(RMS/Φ)	127.5
MAX THEORETICAL ACCEL.	RAD/SEC ²	23,450
TORQUE SENSITIVITY	KI [N-LBS/AMP/RMS/Φ]/(INM/AMP/RMS/Φ)	25.7(2.91)
BACK EMF (LINE TO LINE)	Vrms/Krpm	162
D.C. RESISTANCE (P-P)	OHMS	.14
INDUCTANCE (P-P)	MILLIHENRIES	1.9
ROTOR INERTIA	IN-LBS-SEC ² [KG-M ²]	.1397(.01579)
STATIC FRICTION	TT	13.0(1.5)

CONNECTION CHART

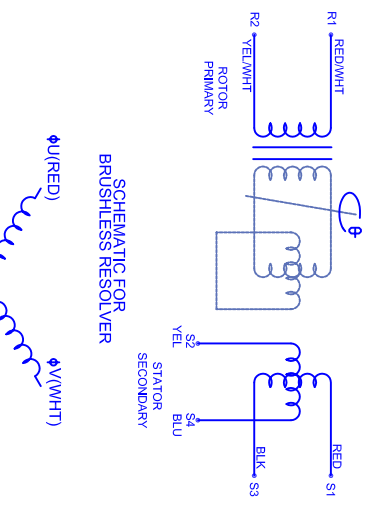
PT02E-14-18P(027)

REST/TERM WIRE LEADS	WIRE FUNCTION	WIRE COLOR
PIN A	-	-
PIN B	-	-
PIN C	-	-
PIN D	RES SHLD	WHT/BLK
PIN E	REF	RED/WHT
PIN F	SIN GND	YEL
PIN G	COS GND	BLK
PIN H	SIN	BLU
PIN J	-	-
PIN K	-	-
PIN L	-	-
PIN M	-	-
PIN N	THERM	WHT
PIN P	-	-
PIN R	REF GND	YEL/WHT
PIN S	COS	RED
PIN T	-	-
PIN U	THERM	WHT

SG3102E-32-17P(027)

MOTOR WIRE LEADS	WIRE FUNCTION	WIRE COLOR
PIN A	Φ U	RED
PIN B	Φ V	WHT
PIN C	Φ W	BLK
PIN D	PE GND	GRN/YEL

SCHEMATIC FOR BRUSHLESS RESOLVER



190MM - 4 STK
460V/KE=162MET/RES/CONN

TOLERANCES UNLESS SPECIFIED	
BORER:	= H2 Ra ✓
DECIMAL .xxx	±.12 (.005)
DECIMAL .xx	±.25 (.010)
DECIMAL .x	±.51 (.020)
ANGLE (MM/INCHES)	±.40 (.016)
REMOVE ALL BURRS/BREAK SHARP EDGES AS SHOWN (0.10°)	
FINISH:	
WATERLAL:	
CUSTOMER: -	DRAWN: DFLA
SCALE 1/2:1	DATE 5/2/04
DRAWING NO. CM1904R162MKRCS	SHEET: 1 OF 1
REV. 1	