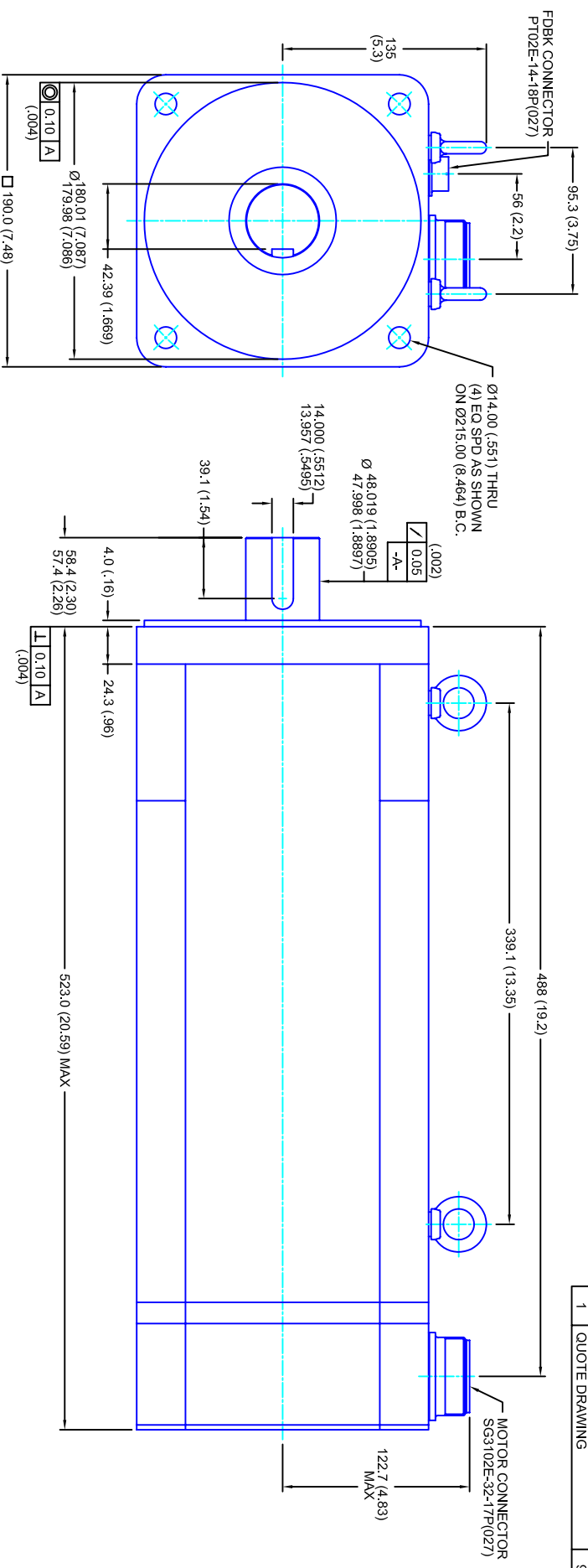


REVISIONS			
REV	DESCRIPTION	DATE	APPD
1	QUOTE DRAWING	9/8/04	



- NOTES:**
1. MILLIMETERS (INCHES)
 2. AXIAL LOAD: 45 KG [100 LBS] MAX
 3. RADIAL LOAD: 113 KG [250 LBS] MAX @ 25.4MM [1.00] FROM FACE
 4. MOTOR SEALED TO IP65
 5. MOTOR SHAFT: G&P STEEL, GRADE 1144
 6. MOTOR FINISH: BLACK MATT FINISH
 7. MOTOR WEIGHT 73 KG [162 LBS]

ELECTRICAL DATA

MOTOR PARAMETERS	UNITS/MEASURE	VALUES
VOLTAGE	VOLTS-AC	480
AMP TYPE	-	SINE
HORSEPOWER	HP	18.0
KILOWATTS	KW	13.4
MAX OPERATING SPEED	RPM	1500
SPEED @ RATED TORQUE	RPM	1200
*CONTINUOUS RATED TORQUE @ 1200 RPM	IN-LBS(INM)	939[106.1]
*CONTINUOUS STALL TORQUE	IN-LBS(INM)	1092[123.4]
CONTINUOUS LINE CURRENT	AMPS(RMS/Φ)	21.2
PEAK TORQUE	IN-LBS(INM)	3276[370.2]
PEAK CURRENT	AMPS(RMS/Φ)	63.6
MAX THEORETICAL ACCEL.	RAD/SEC ²	23,450
TORQUE SENSITIVITY	KI [N-LBS/AMP/RMS/Φ]/(INM/AMP/RMS/Φ)	51.5[5.82]
BACK EMF (LINE TO LINE)	Vrms/Krpm	324
D.C. RESISTANCE (P-P)	OHMS	.53
INDUCTANCE (P-P)	MILLIHENRIES	7.8
ROTOR INERTIA	IN-LBS-SEC ² [KG-M ²]	.1397[.01579]
STATIC FRICTION	TT	13.0[1.5]

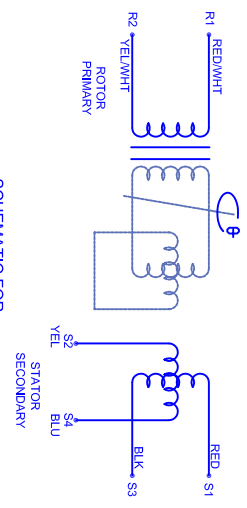
CONNECTION CHART

PT02E-14-18P(027)

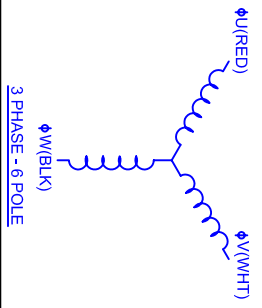
REST/TERM WIRE LEADS	WIRE FUNCTION	WIRE COLOR
PIN A	-	-
PIN B	-	-
PIN C	-	-
PIN D	RES SHLD	WHT/BLK
PIN E	REF	RED/WHT
PIN F	SIN GND	YEL
PIN G	COS GND	BLK
PIN H	SIN	BLU
PIN J	-	-
PIN K	-	-
PIN L	-	-
PIN M	-	-
PIN N	THERM	WHT
PIN P	-	-
PIN R	REF GND	YEL/WHT
PIN S	COS	RED
PIN T	-	-
PIN U	THERM	WHT

SG3102E-32-17P(027)

MOTOR WIRE LEADS	WIRE FUNCTION	WIRE COLOR
PIN A	ΦU	RED
PIN B	ΦV	WHT
PIN C	ΦW	BLK
PIN D	PE GND	GRN/YEL



SCHEMATIC FOR BRUSHLESS RESOLVER



3 PHASE - 6 POLE

TOLERANCES UNLESS SPECIFIED

BORE: = H12 ✓
 SURFACE FINISH: = 63 Ra ✓
 DECIMAL .xxx ±.12 (.005)
 DECIMAL .xx ±.25 (.010)
 DECIMAL .x ±.51 (.020)
 FRACTION ±.01 (.016)
 ANGLE (MM/INCHES) ±.030

REMOVE ALL BURRS/BREAK SHARP EDGES AS SHOWN (0.10°)

PROPRIETARY RIGHTS OF CUSTOM MOTORS ARE INCLUDED IN THE INFORMATION PROVIDED HEREIN. THIS INFORMATION DOES NOT BE REPRODUCED OR TRANSMITTED IN ANY FORM OR BY ANY MEANS, ELECTRONIC OR MECHANICAL, INCLUDING PHOTOCOPYING, RECORDING, OR BY ANY INFORMATION STORAGE AND RETRIEVAL SYSTEM.

CUSTOM MOTORS INC

190MM - 4 STK

480V/KE=324MET/RES/CONN

CUSTOMER: -

SCALE 1/2:1

DATE 9/8/04

DRAWING NO. CM1904R324MKRCS

DRAWN: DFLA

SHEET: 1 OF 1

REV. 1